



SUPER JAW



吉華麗精密實業股份有限公司
41143 台中市太平區永豐路157巷24號
電話：04-22785378 / 傳真：04-22706809



SUPER JAW INDUSTRY CO.,LTD.

NO.24, Lane 157, Yung Feng Road, Taiping Dist.,
Taichung City, 41143 Taiwan
TEL : 886-4-22785378 FAX : 886-4-22706809
http://www.superjaw.com.tw E-mail: superjai@ms69.hinet.net



版權所有 · 翻印必究

SOFT JAWS
HARD JAWS
POWER CHUCKS
TEENUT SET

▶ 精密切削夾具 專業製造廠

▶ Professional manufacturer

出版日期 / Edition 1,2020



創立於1970年
Established in 1970

吉華麗產品在業界已經是高精密、高品質、高性價比的代名詞。除了供應台灣各大工具機廠及製造廠第一流的產品及服務之外，銷售管道更積極拓展至中國大陸及歐美市場。

精密零組件的製造沒有祕訣，也沒有捷徑，而是逐步踏實，正派經營，是吉華麗在業界屹立不搖的基礎。所有產品製程及內外部品管圈裡面的每一個環節，對吉華麗所有的工程人員而言，精度，不只是我們所要求的量測數據而已，精度是我們自始至終的一貫態度。

夾治具五大原則

- 夾持穩固
- 中心準確度
- 動平衡
- 真圓不變形
- 替換工作便捷



Three guarantees to create more value.

頂尖的團隊

WE ARE BEST TEAM

設計開發 /Design & development

以3D設計軟體Solid Work針對客戶特殊需求量身製作，最符合客戶生產線的夾製具

生產管制 /Manufacturing control

一貫性標準作業，且引進德國Kafer量錶、瑞士TESA、日本Mitutoyo等量測儀器，作為產品在出廠之前最嚴格的把關

售後服務 /After-sales service

秉持服務業的精神，為客戶提供即時服務，且每組產品都會刻印上 G-FA 商標確保客戶權利



Accuracy is not just data, it is our attitude.

三大保證
創造更高品質

INDEX

P.01- P.06

油壓生爪系列
SOFT JAWS FOR
HYDRAULIC CHUCKS



P.7

特殊油壓生爪系列
SPECIAL SOFT JAWS FOR
HYDRAULIC CHUCKS



P.8

北川T型產
TEENIT SET



P.9

裹層生爪系列
WRAPPED SOFT JAWS



P.9

成形圈
FORMING RING



P.10

油壓硬爪系列
HARD JAWS FOR
HYDRAULIC CHUCKS



P.10

後拉式生爪系列
SOFT JAWS FOR PULL
BACK POWER CHUCKS



P.10

CNC車床專用拉料器
Bar Puller
For CNC Lathe



P.11- P.12

雙和生爪系列
HWA SOFT JAWS FOR
HYDRAULIC CHUCKS



P.13- P.14

強力型生爪系列
TONGUE & GROOVE
SOFT JAWS



P.15

油壓夾頭系列
HYDRAULIC CHUCKS



P.16

三爪中空長行程夾頭
3-JAW LONG STROKE
HOLLOW POWER CHUCKS



P.17- P.18

特殊形夾頭系列
SPECIAL HYDRAULIC
CHUCKS



P.19- P.20

手動夾頭系列
SCROLL CHUCKS SERIES



P.21- P.22

空白尺寸填寫表

油壓生爪成型圈

SOFT JAW Forming Ring



三夾順著（漩渦狀態）緩緩迴轉夾緊，可任意調整外夾，內強所需尺寸。

「偏心制止帽構」逆向鎖緊，活動行程大。

不須再鑽孔攻牙，利用生爪之螺絲孔插入制止帽構。

本體材質經熱處理後研磨，硬度高，強韌耐久使用。

特點

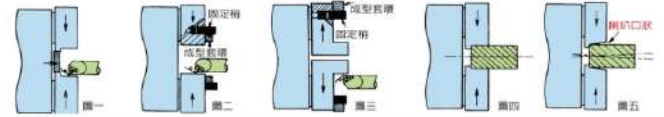
- 成型圈適用4"、5"、6"、8"、10"、12"、15"七種尺寸油壓夾頭。
- 握力增強，提高真圓度，圓筒度等精度，不會產生喇叭口狀及離心震動，影響精度。
- 外夾內第二者均可使用，可任意調整所需尺寸，操作迅速簡便，節省時間，永久使用。
- 圈的夾頭使用成型圈後，可量高精度及握持力，使圓度與新基一樣。

使用說明

使用成型圈，不但能達到外夾，內強與穿過成形3種方式的成形，而可夾住工作物件時在同樣的狀態成形，所以若有變少，總握力變昇。(如圖一、二、三)

使用成型圈，與夾頭一成形時，無芯棒產廢棄，把握力達100%，可提高精度。(如圖四)

使用硬爪夾持時，接觸面不會產生喇叭口狀，把握力不長會產生離心震動，影響精度，危險性高。(如圖五)



CNC修爪專用修整圈

Trimmer for Ring

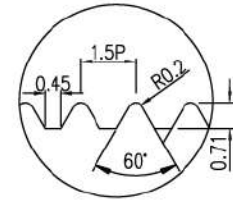
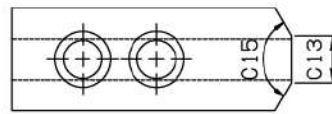


尺寸 DIMENSION	
A	Ø120 ~ Ø20
B	Ø130 ~ Ø30
C	Ø150 ~ Ø20

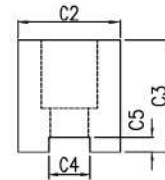
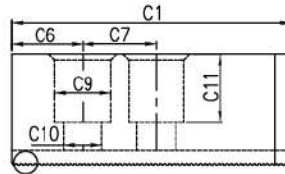
適用

CH油壓型 4"、5"、6"、8"、10"
SK強力型 4"、5"、6"、7"、8"、9"、10"
各尺寸 2爪、3爪、4爪、6爪

▲修爪壓力:3~5kg



Pitch 1.5齒形詳圖

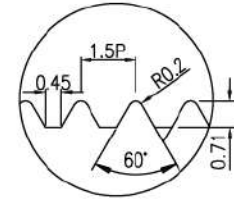
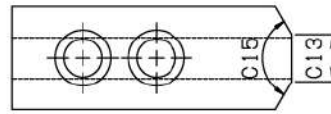


CH-04

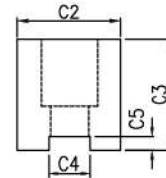
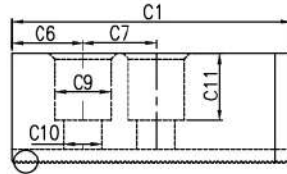
型號 Model	C1	C2	C3	C4	C5	C6	C7	C9	C10	C11	C13	C15	M	毛重 Weight Kg/set
041430H	50	27	30	10	4	10	14	13.8	9	21	3	120°	M8X20L	0.6
041440H	50	27	40	10	4	10	14	13.8	9	31	3	120°	M8X20L	1.0
041450H	50	27	50	10	4	10	14	13.8	9	41	3	120°	M8X20L	1.2

CH-05

型號 Model	C1	C2	C3	C4	C5	C6	C7	C9	C10	C11	C13	C15	M	毛重 Weight Kg/set
051430H	62	27	30	10	4	10	14	13.8	9	21	3	120°	M8X20L	0.9
051450H	62	27	50	10	4	10	14	13.8	9	41	3	120°	M8X20L	1.5
051460H	62	27	60	10	4	10	14	13.8	9	51	3	120°	M8X20L	1.7
051470H	62	27	70	10	4	10	14	13.8	9	61	3	120°	M8X20L	2
051480H	62	27	80	10	4	10	14	13.8	9	71	3	120°	M8X20L	2.3
051490H	62	27	90	10	4	10	14	13.8	9	81	3	120°	M8X20L	2.6
0514100H	62	27	100	10	4	10	14	13.8	9	91	3	120°	M8X20L	3
051830H	62	27	30	10	4	10	18	13.8	9	21	3	120°	M8X20L	0.9
051850H	62	27	50	10	4	10	18	13.8	9	41	3	120°	M8X20L	1.5
051860H	62	27	60	10	4	10	18	13.8	9	51	3	120°	M8X20L	1.7
051870H	62	27	70	10	4	10	18	13.8	9	61	3	120°	M8X20L	2
051880H	62	27	80	10	4	10	18	13.8	9	71	3	120°	M8X20L	2.3
051890H	62	27	90	10	4	10	18	13.8	9	81	3	120°	M8X20L	2.6
0518100H	62	27	100	10	4	10	18	13.8	9	91	3	120°	M8X20L	3
051930H	62	27	30	10	4	10	19	13.8	9	21	3	120°	M8X20L	0.9
051950H	62	27	50	10	4	10	19	13.8	9	41	3	120°	M8X20L	1.5
051960H	62	27	60	10	4	10	19	13.8	9	51	3	120°	M8X20L	1.7
051970H	62	27	70	10	4	10	19	13.8	9	61	3	120°	M8X20L	2
051980H	62	27	80	10	4	10	19	13.8	9	71	3	120°	M8X20L	2.3
051990H	62	27	90	10	4	10	19	13.8	9	81	3	120°	M8X20L	2.6
0519100H	62	27	100	10	4	10	19	13.8	9	91	3	120°	M8X20L	3



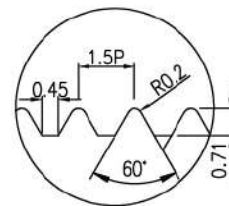
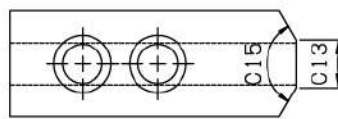
Pitch 1.5齒形詳圖



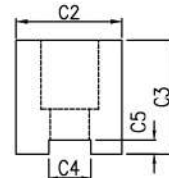
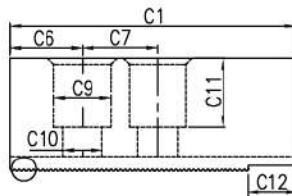
CH-06

型號 Model	C1	C2	C3	C4	C5	C6	C7	C9	C10	C11	C13	C15	M	毛重 Weight Kg/set
061236H	73	31	36	12	5	15	20	17	11	23	14	120°	M10X25L	1.5
061250H	73	31	50	12	5	15	20	17	11	37	14	120°	M10X25L	2
061260H	73	31	60	12	5	15	20	17	11	47	14	120°	M10X25L	2.6
061270H	73	31	70	12	5	15	20	17	11	57	14	120°	M10X25L	3
061280H	73	31	80	12	5	15	20	17	11	67	14	120°	M10X25L	3.4
0612100H	73	31	100	12	5	15	20	17	11	87	14	120°	M10X25L	4.2
061236H-	73	31	36	12	5	15	20	17	11	23	31	-	M10X25L	1.7
061250H-	73	31	50	12	5	15	20	17	11	37	31	-	M10X25L	2.2
061260H-	73	31	60	12	5	15	20	17	11	47	31	-	M10X25L	2.8
061280H-	73	31	80	12	5	15	20	17	11	67	31	-	M10X25L	3.6
0612100H-	73	31	100	12	5	15	20	17	11	87	31	-	M10X25L	4.3
0612130H-	73	31	130	12	5	15	20	17	11	117	31	-	M10X25L	5.6
061236H * 120	73	31	36	12	5	10	20	17	11	23	3	120°	M10X25L	1.5
061250H * 120	73	31	50	12	5	10	20	17	11	37	3	120°	M10X25L	2
061260H * 120	73	31	60	12	5	10	20	17	11	47	3	120°	M10X25L	2.5
061280H * 120	73	31	80	12	5	10	20	17	11	67	3	120°	M10X25L	3.3
0612100H * 120	73	31	100	12	5	10	20	17	11	87	3	120°	M10X25L	4
0612120H * 120	73	31	120	12	5	10	20	17	11	107	3	120°	M10X25L	4.8
061236H * 90	73	31	36	12	5	10	20	17	11	23	3	90°	M10X25L	1.4
061250H * 90	73	31	50	12	5	10	20	17	11	37	3	90°	M10X25L	1.9
061260H * 90	73	31	60	12	5	10	20	17	11	47	3	90°	M10X25L	2.4
061280H * 90	73	31	80	12	5	10	20	17	11	67	3	90°	M10X25L	3.2
061236H * 60	73	31	36	12	5	10	20	17	11	23	3	60°	M10X25L	1.3
061260H * 60	73	31	60	12	5	10	20	17	11	47	3	60°	M10X25L	2.2
061280H * 60	73	31	80	12	5	10	20	17	11	67	3	60°	M10X25L	2.9





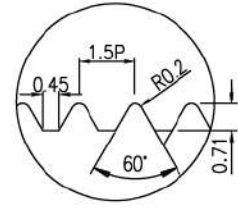
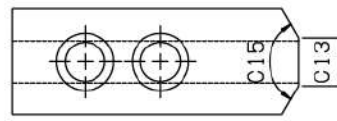
Pitch 1.5齒形詳圖



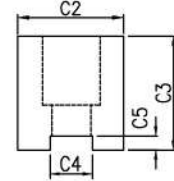
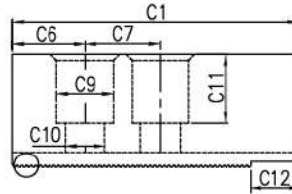
CH-08

型號 Model	C1	C2	C3	C4	C5	C6	C7	C9	C10	C11	C12	C13	C15	M	毛重 Weight Kg/set
081438H	95	35	38	14	5	24	25	19	13	23	20.5	16	120°	M12X30L	2.5
081450H	95	35	50	14	5	24	25	19	13	35	20.5	16	120°	M12X30L	3.2
081460H	95	35	60	14	5	24	25	19	13	45	20.5	16	120°	M12X30L	3.8
081470H	95	35	70	14	5	24	25	19	13	55	20.5	16	120°	M12X30L	4.4
081480H	95	35	80	14	5	24	25	19	13	65	20.5	16	120°	M12X30L	5.1
0814100H	95	35	100	14	5	24	25	19	13	85	20.5	16	120°	M12X30L	6.4
081438H-	95	35	38	14	5	24	25	19	13	23	20.5	35	-	M12X30L	2.6
081460H-	95	35	60	14	5	24	25	19	13	45	20.5	35	-	M12X30L	3.9
081480H-	95	35	80	14	5	24	25	19	13	65	20.5	35	-	M12X30L	5.3
0814100H-	95	35	100	14	5	24	25	19	13	85	20.5	35	-	M12X30L	6.6
0814120H-	95	35	120	14	5	24	25	19	13	105	-	35	-	M12X30L	7.9
0814150H-	95	35	150	14	5	24	25	19	13	135	-	35	-	M12X30L	9.8
0814200H-	95	35	200	14	5	24	25	19	13	170	-	35	-	M12X45L	14
0814250H-	95	35	250	14	5	24	25	19	13	200	-	35	-	M12X65L	18
081438H * 120	95	35	38	14	5	14	25	19	13	23	20.5	3	120°	M12X30L	2.5
081450H * 120	95	35	50	14	5	14	25	19	13	35	20.5	3	120°	M12X30L	3.2
081460H * 120	95	35	60	14	5	14	25	19	13	45	20.5	3	120°	M12X30L	3.8
081480H * 120	95	35	80	14	5	14	25	19	13	65	20.5	3	120°	M12X30L	5.1
0814100H * 120	95	35	100	14	5	14	25	19	13	85	20.5	3	120°	M12X30L	6.4
081438H * 90	95	35	38	14	5	14	25	19	13	23	20.5	5	90°	M12X30L	2.3
081460H * 90	95	35	60	14	5	14	25	19	13	45	20.5	5	90°	M12X30L	3.6
081480H * 90	95	35	80	14	5	14	25	19	13	65	20.5	5	90°	M12X30L	4.8
081438H * 60	95	35	38	14	5	14	25	19	13	23	20.5	5	60°	M12X30L	2.1
081460H * 60	95	35	60	14	5	14	25	19	13	45	20.5	5	60°	M12X30L	2.8
081480H * 60	95	35	80	14	5	14	25	19	13	65	20.5	5	60°	M12X30L	4.5





Pitch 1.5齒形詳圖



CH-10

型號 Model	C1	C2	C3	C4	C5	C6	C7	C9	C10	C11	C12	C13	C15	M	毛重 Weight Kg/set
101642H	110	40	42	16	5	30	30	19	13	27	20.5	18	120°	M12X30L	3.7
101650H	110	40	50	16	5	30	30	19	13	35	20.5	18	120°	M12X30L	4.2
101660H	110	40	60	16	5	30	30	19	13	45	20.5	18	120°	M12X30L	5.3
101680H	110	40	80	16	5	30	30	19	13	65	20.5	18	120°	M12X30L	7.1
1016100H	110	40	100	16	5	30	30	19	13	85	20.5	18	120°	M12X30L	8.8
101642H-	110	40	42	16	5	30	30	19	13	27	20.5	40	-	M12X30L	3.8
101660H-	110	40	60	16	5	30	30	19	13	45	20.5	40	-	M12X30L	5.4
101680H-	110	40	80	16	5	30	30	19	13	65	20.5	40	-	M12X30L	7.2
1016100H-	110	40	100	16	5	30	30	19	13	85	20.5	40	-	M12X30L	9
1016120H-	110	40	120	16	5	30	30	19	13	105	-	40	-	M12X30L	11
1016150H-	110	40	150	16	5	30	30	19	13	135	-	40	-	M12X30L	13.7
1016200H-	110	40	200	16	5	30	30	19	13	170	-	40	-	M12X45L	18.2
1016250H-	110	40	250	16	5	30	30	19	13	200	-	40	-	M12X65L	22.8
1016280H-	110	40	280	16	5	30	30	19	13	200	-	40	-	M12X95L	25.5
101642H * 120	110	40	42	16	5	20	30	19	13	27	20.5	3	120°	M12X30L	3.7
101650H * 120	110	40	50	16	5	20	30	19	13	35	20.5	3	120°	M12X30L	4.3
101660H * 120	110	40	60	16	5	20	30	19	13	45	20.5	3	120°	M12X30L	5.1
101680H * 120	110	40	80	16	5	20	30	19	13	65	20.5	3	120°	M12X30L	6.9
1016100H * 120	110	40	100	16	5	20	30	19	13	85	20.5	3	120°	M12X30L	8.5
101642H * 90	110	40	42	16	5	20	30	19	13	27	20.5	5	90°	M12X30L	3.5
101660H * 90	110	40	60	16	5	20	30	19	13	45	20.5	5	90°	M12X30L	4.9
101680H * 90	110	40	80	16	5	20	30	19	13	65	20.5	5	90°	M12X30L	6.7
101642H * 60	110	40	42	16	5	20	30	19	13	27	20.5	5	60°	M12X30L	3.4
101660H * 60	110	40	60	16	5	20	30	19	13	45	20.5	5	60°	M12X30L	4.8
101680H * 60	110	40	80	16	5	20	30	19	13	65	20.5	5	60°	M12X30L	6.6



CH-12 (中實夾頭18溝)

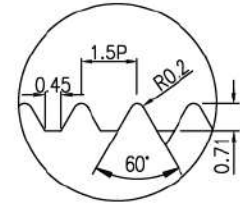
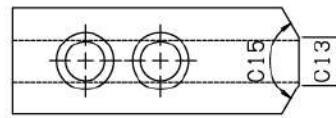
材質:中碳鋼 Steel S50C

鋸齒狀節距 1.5mm * 60°

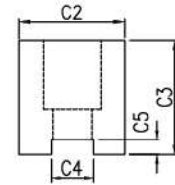
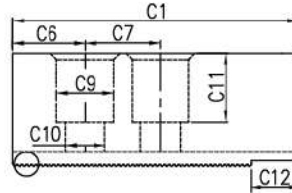
SOLID POWER CHUCKS (18R)

CHUCK Ø304

Serration Pitch 1.5mm * 60° 單位/UNIT:mm



Pitch 1.5齒形詳圖



CH-12

型號 Model	C1	C2	C3	C4	C5	C6	C7	C9	C10	C11	C12	C13	C15	M	毛重 Weight Kg/set
121850H	129	50	50	18	6	39	30	23	16	30	20	22	120°	M14X45L	6.5
121860H	129	50	60	18	6	39	30	23	16	40	20	22	120°	M14X45L	7.8
121870H	129	50	70	18	6	39	30	23	16	50	20	22	120°	M14X45L	9.1
121880H	129	50	80	18	6	39	30	23	16	60	20	22	120°	M14X45L	10.5
1218100H	129	50	100	18	6	39	30	23	16	80	20	22	120°	M14X45L	12.9
121850H * 120	129	50	50	18	6	16	30	23	16	30	20	5	120°	M14X45L	6.3
121860H * 120	129	50	60	18	6	16	30	23	16	40	20	5	120°	M14X45L	7.5
121880H * 120	129	50	80	18	6	16	30	23	16	60	20	5	120°	M14X45L	10.2
1218100H * 120	129	50	100	18	6	16	30	23	16	80	20	5	120°	M14X45L	12.5

CH-12 (中空夾頭21溝)

材質:中碳鋼 Steel S50C

鋸齒狀節距 1.5mm * 60°

HIGH SPEED HOLLOW POWER CHUCKS (21R)

CHUCK Ø304

Serration Pitch 1.5mm * 60° 單位/UNIT:mm

CH-12

型號 Model	C1	C2	C3	C4	C5	C6	C7	C9	C10	C11	C12	C13	C15	M	毛重 Weight Kg/set
122150H	129	50	50	21	6	39	30	26	17	30	20	22	120°	M16X40L	6.2
122160H	129	50	60	21	6	39	30	26	17	40	20	22	120°	M16X40L	7.5
122170H	129	50	70	21	6	39	30	26	17	50	20	22	120°	M16X40L	8.9
122180H	129	50	80	21	6	39	30	26	17	60	20	22	120°	M16X40L	10.2
1221100H	129	50	100	21	6	39	30	26	17	80	20	22	120°	M16X40L	12.5
122150H * 120	129	50	50	21	6	18	30	26	17	30	20	5	120°	M16X40L	6
122160H * 120	129	50	60	21	6	18	30	26	17	40	20	5	120°	M16X40L	7.2
122180H * 120	129	50	80	21	6	18	30	26	17	60	20	5	120°	M16X40L	9.8
1221100H * 120	129	50	100	21	6	18	30	26	17	80	20	5	120°	M16X40L	12.2

CH-15 CH-18

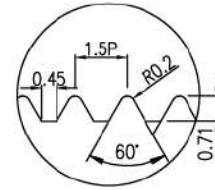
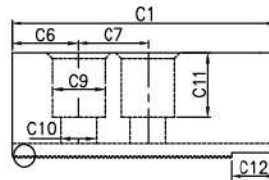
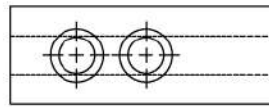
材質:中碳鋼 Steel S50C

鋸齒狀節距 1.5mm * 60°

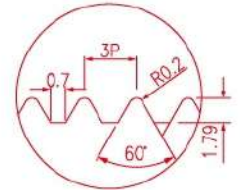
SOFT JAWS FOR HYDRAULIC CHUCKS

CHUCK Ø381 Ø450

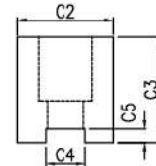
Serration Pitch 1.5mm * 60° 單位/UNIT:mm



Pitch 1.5齒形詳圖



Pitch 3.0齒形詳圖



CH-15	CH-18												M	毛重 Weight Kg/set
型號 Model	C1	C2	C3	C4	C5	C6	C7	C9	C10	C11	C12			
152262H	165	62	62	22	8	37	43	32	21	38	18.5	M20X60L	12.8	
152280H	165	62	80	22	8	37	43	32	21	56	18.5	M20X60L	16	
1522100H	165	62	100	22	8	37	43	32	21	76	18.5	M20X60L	20	
1522120H	165	62	120	22	8	37	43	32	21	96	18.5	M20X60L	25.1	
1522150H	165	62	150	22	8	37	43	32	21	126	18.5	M20X60L	31.1	
152262HK	165	62	62	22	8	21	43	32	21	38	18.5	M20X60L	12.8	
152280HK	165	62	80	22	8	21	43	32	21	56	18.5	M20X60L	12.8	
1525.562H	165	62	62	25.5	5	37	43	32	21	38	18.5	M20X60L	12.8	
1525.580H	165	62	80	25.5	5	37	43	32	21	56	18.5	M20X60L	16	
1825.562H	165	62	62	25.5	5	37	43	32	21	38	18.5	M20X60L	12.8	
1825.5100H	165	62	100	25.5	5	37	43	32	21	76	18.5	M20X60L	20.5	

CH-21 CH-24

材質:中碳鋼 Steel S50C

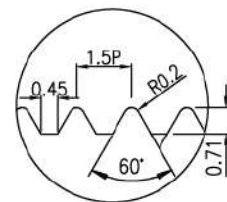
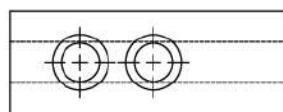
鋸齒狀節距 3.0mm * 60°

SOFT JAWS FOR HYDRAULIC CHUCKS

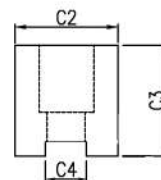
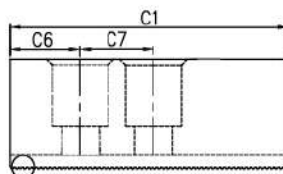
CHUCK Ø530 Ø610

Serration Pitch 3.0mm * 60° 單位/UNIT:mm

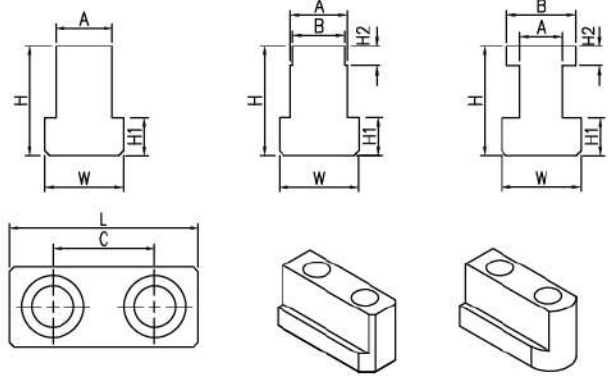
CH-21	CH-24												M	毛重 Weight Kg/set
型號 Model	C1	C2	C3	C4	C5	C6	C7	C9	C10	C11	C12			
212570H	180	62	70	25	9	40	60	32	21	45	-	M20X60L	16.3	
2125100H	180	62	100	25	9	40	60	32	21	75	-	M20X60L	22.9	
242570H	180	62	70	25	9	40	60	32	21	45	-	M20X60L	16.3	
2425100H	180	62	100	25	9	40	60	32	21	75	-	M20X60L	22.9	



Pitch 1.5齒形詳圖



規格 Size	型號 Model	C1	C2	C3	C4	C6	C7	M	毛重 Weight Kg/set
CH-06	0673L50W50H	73	50	50	12	15 (10)	20	M10X25L	3.6
	0673L50W80H	73	50	80	12	15 (10)	20	M10X25L	6
	0673L60W60H	73	60	60	12	15 (10)	20	M10X25L	5.4
	0680L31W36H	80	31	36	12	15 (10)	20	M10X25L	1.8
	06110L31W60H	110	31	60	12	15 (10)	20	M10X25L	4.2
CH-08	0895L50W50H	95	50	50	14	24 (14)	25	M12X30L	4.8
	0895L50W70H	95	50	70	14	24 (14)	25	M12X30L	6.9
	0895L50W150H	95	50	150	14	24 (14)	25	M12X30L	15
	0895L60W50H	95	60	50	14	24 (14)	25	M12X30L	6.3
	0895L70W50H	95	70	50	14	24 (14)	25	M12X30L	6.9
	0895L80W50H	95	80	50	14	24 (14)	25	M12X30L	8.7
	0895L100W50H	95	100	50	14	24 (14)	25	M12X30L	10.8
	08120L35W60H	120	35	60	14	24 (14)	25	M12X30L	5.7
	08150L35W50H	150	35	50	14	24 (14)	25	M12X30L	6
	08200L35W50H	200	35	50	14	24 (14)	25	M12X30L	7.8
CH-10	10110L50W50H	110	50	50	16	30 (20)	30	M12X30L	5.7
	10110L50W70H	110	50	70	16	30 (20)	30	M12X30L	8.1
	10110L50W100H	110	50	100	16	30 (20)	30	M12X30L	11.4
	10110L60W50H	110	60	50	16	30 (20)	30	M12X30L	7.3
	10110L60W80H	110	60	80	16	30 (20)	30	M12X30L	11.7
	10110L80W60H	110	80	60	16	30 (20)	30	M12X30L	12
	10110L100W50H	110	100	50	16	30 (20)	30	M12X30L	11.8
	10150L40W60H	150	40	60	16	30 (20)	30	M12X30L	8
	10180L40W60H	180	40	60	16	30 (20)	30	M12X30L	9.8
	10230L40W60H	230	40	60	16	30 (20)	30	M12X30L	11.7



樣式一

樣式二

規格 Size	L	W	H	A	B	C	H1	H2	M	卡盤型號對照表	
TA05B205	26	15	15	10	-	14	5.5	-	M8X20L	OP-204/OP-205	B-204/BT204/B-205/BT205
TA05B205-18	30	15	15	10	-	18	5.5	-	M8X20L	OP20506C	B-05/BT05/H08-5/H08T-5
TA05B205-19	32	15	18	10	-	19	5.5	-	M8X20L		N-05/NT05/HJ-5
TA06B206	36.5	17.5	18.5	12	-	20	7.5	-	M10X25L	OP-206	BB206/B-206/H0H-206/BL206
TA08B208	46.5	20.5	20.5	14	-	25	8.5	-	M12X30L	OP-208	B-208/BB208/BS308/BT208
TA10B210	51	22.5	21.5	16	-	30	8.5	-	M12X30L	OP-210	B-210/BB210/BS310/BT210
TA12B212	55.5	29.5	28	21	-	30	11.5	-	M16X40L	OP-212	B-212/BT212/BL212/BTL212
TA15B215	80	33.5	46	24	22	43	16.5	8.2	M20X60L	OP-215/OP-218	B-215
TA21B221	90	37.5	45	25	-	50	19	-	M20X60L	OP-221/CL-210P	B-21/B-24
TA24B224	100	37.5	45	25	-	60	19	-	M20X60L	OP-224/CL-240P	B-21/B-24
TA06B06	36.5	17.5	22.5	12	-	20	7.5	-	M10X30L	CL-06	B-06/BT06
TA08B08	48	20.5	25.5	14	-	25	9.5	-	M12X35L	CL-08	B-08/BT08
TA10B10	55	22.5	25.5	16	-	30	9.5	-	M12X35L	CL-10	B-10/BT10
TA12B12	55.5	26.5	33.5	18	-	30	13.5	-	M14X45L	CL-12	B-12/BT12
TA15B15	80	35	39	25.5	-	43	19	-	M20X60L	CL-15(OP)/CL-18(OP)	B-15/BT15/B-18

轉變型 T 型滑塊 (Transformation type)

規格/SIZE 大→小	夾頭A	生爪B	A→B	C	M	H	規格/SIZE 小→大	夾頭A	生爪B	A→B	C	M	H
TA06B206-B205	6"	5"	12→10	14	M8X20L	18.5	TA06B206-B208	6"	8"	12→14	25	M10X25L	18.5
TA08B208-B206	8"	6"	14→12	20	M10X25L	20.5	TA08B208-B210	8"	10"	14→16	30	M12X30L	20.5
TA10B210-B208	10"	8"	16→14	25	M12X30L	21.5	TA12B212-B210	12"	10"	21→16	30	M12X35L	28.5

[特殊尺寸填寫表] PLEASE FILL THE BLANKS BELOW, IF YOU NEED SPECIFIC ONE(S)

L:	W:	H:	A:	B:	C:	H1:	H2:	M:
----	----	----	----	----	----	-----	-----	----

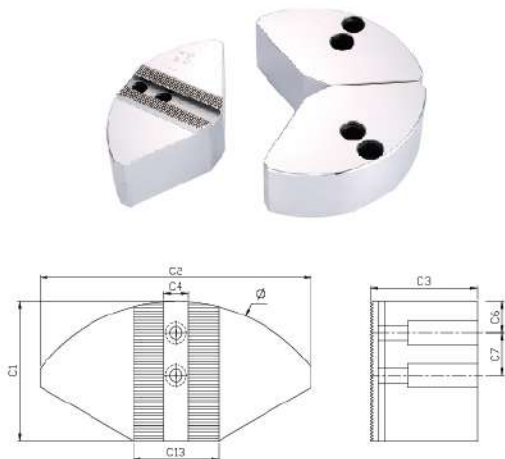
扇型全包型生爪

WRAPPED SOFT JAWS

材質:中碳鋼 Steel S50C

鋸齒狀節距 1.5mm * 60°

Serration Pitch 1.5mm * 60° 單位/UNIT:mm



規格 Size	型號 Model	C1	C2	C3	C4	C6	C7	C13	M	Ø	毛重 Weight Kg/set
CH-05	05115W30H	60	115	30	10	12	14	25	M8	Ø125	3.2
CH-06	06130W44H	71	130	44	12	15	20	31	M10	Ø165	6.8
	06130W54H	71	130	54	12	15	20	31	M10	Ø165	7.5
CH-08	08180W44H	93	180	44	14	24	25	35	M12	Ø210	12.4
	08180W54H	93	180	54	14	24	25	35	M12	Ø210	15.5
CH-10	10210W54H	108	210	54	16	30	30	40	M12	Ø254	22.6
	10210W64H	108	210	64	16	30	30	40	M12	Ø254	31.5
CH-12	12310W54H	127	310	54	21	39	30	50	M16	Ø310	43

成形圈 三爪

FORMING RING (3-JAW)

材質:白十字 SNCM21

單位/UNIT:mm



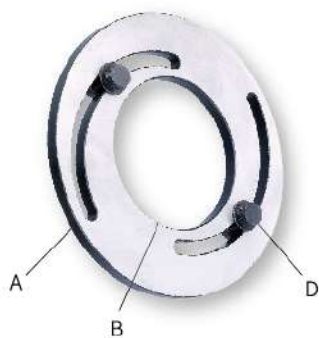
規格 Size	A	B	D	毛重 Weight Kg/set
FM04	Ø115	Ø55	Ø13	0.5
FM05	Ø135	Ø75	Ø13	0.8
FM06	Ø167	Ø85	Ø16.5	3.1
FM08	Ø217	Ø115	Ø18.5	2.4
FM10	Ø257	Ø150	Ø18.5	3
FM12-18	Ø308	Ø190	Ø22.5	5.1
FM12-21	Ø308	Ø190	Ø25.5	5.2
FM15	Ø380	Ø230	Ø31.5	9.6

成形圈 二爪

FORMING RING (2-JAW)

材質:白十字 SNCM21

單位/UNIT:mm



規格 Size	A	B	D	毛重 Weight Kg/set
FM08-2	Ø217	Ø115	Ø18.5	2.8
FM10-2	Ø257	Ø150	Ø18.5	3.7

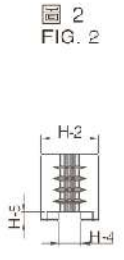
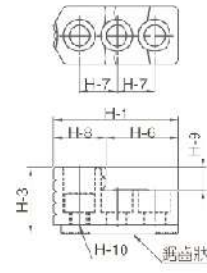
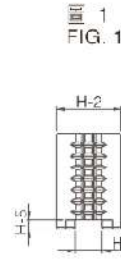
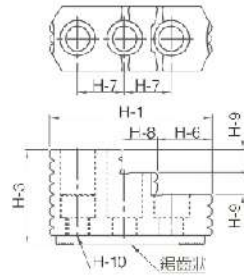
油壓硬爪

HARD JAWS
FOR HYDRAULIC CHUCK

材質: 白十字 SNCRM21

鋸齒狀節距 1.5mm * 60°

Serration Pitch 1.5mm * 60° 單位/UNIT:mm



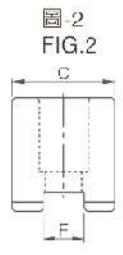
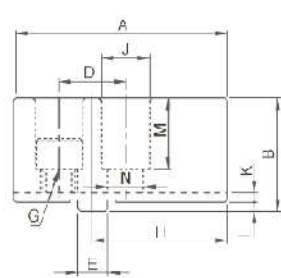
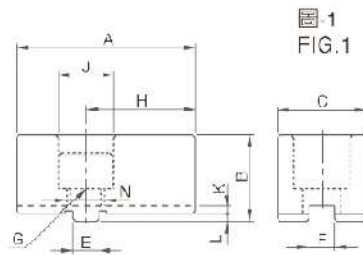
型號 Model	H-1	H-2	H-3	H-4	H-5	H-6	H-7	H-8	H-9	H-10	參考圖 Reference Drawing	毛重 Weight Kg/set
HJ-05	53	23	28	10	4	29	14	24	10	M8X1.25P	2	0.5
HJ-06	67	31	36	12	5	39	20	28	12	M10X1.5P	2	1
HJ-08	87	35	51	14	5	29.5	25	18	12	M12X1.75P	1	2
HJ-10	101	40	54	16	5	45.5	30	18	13	M12X1.75P	1	2.9
HJ-12	108	50	67	21(18)	4(5)	49	30	20	16	M16X2P (M14X2P)	1	3.7
HJ-15	143	62	86	22(25.5)	8(5)	55	43	38	20	M20X2.5P	1	10

後拉式生爪

SOFT JAWS
FOR PULL BACK POWER CHUCK

材質: 中碳鋼 Steel S50C

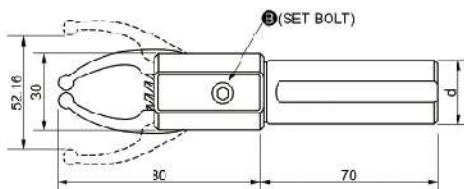
單位/UNIT:mm



型號 Model	A	B	C	D	E	F	H	J	K	L	M	N	G	參考圖 Reference Drawing
S-06	70	34	35	-	10	10	43	23	3.0	3.0	21	15.5	M14X2P	1
S-08	84	44.5	40	26	12	16	53	20	3.5	3.5	29	13.5	M12X1.75P	2
S-10	100	49.5	50	32	15	18	62	23	3.5	3.5	32	32	M14X2P	2
S-12	120	54.5	60	36	17	20	78	26	3.5	3.5	36	17.5	M16X2P	2

拉料器

CNC車床專用拉料器 Bar Puller For CNC Lathe



型號/Model	G-FA 20	G-FA 25	G-FA 32
夾持範圍	0-52Øm/m	0-52Øm/m	0-52Øm/m
夾持力量	0-25kg	0-25kg	0-25kg
伸縮量	2m/m	2m/m	2m/m
柄徑 d	Ø20	Ø25	Ø32

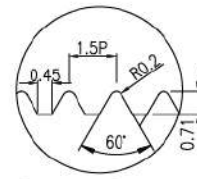
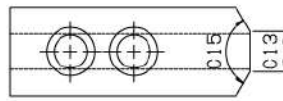
HO-05 HO-06

材質:中碳鋼 Steel S50C

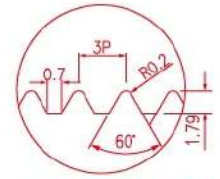
鋸齒狀節距 1.5mm * 60°

SOFT JAWS FOR HYDRAULIC CHUCKS
CHUCK Ø135 Ø168

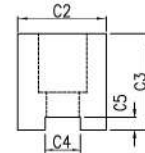
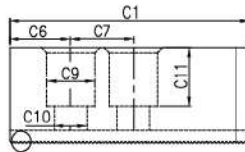
Serration Pitch 1.5mm * 60° 單位/UNIT:mm



Pitch 1.5齒形詳圖



Pitch 3.0齒形詳圖



規格 Size	型號 Model	C1	C2	C3	C4	C5	C6	C7	C9	C10	C11	C13	C15	M	毛重 Weight Kg/set
HO-05	051630H	62	25	30	11	4	10	16	13.8	9	21	3	120°	M8	0.9
	051650H	62	25	50	11	4	10	16	13.8	9	41	3	120°	M8	1.5
HO-06	061236H	73	31	36	12	5	15	20	17	11	23	14	120°	M10	1.5
	061250H	73	31	50	12	5	15	20	17	11	37	14	120°	M10	2

HO-08 HO-10 HO-12

材質:中碳鋼 Steel S50C

鋸齒狀節距 1.5mm * 60°

SOFT JAWS FOR HYDRAULIC CHUCKS
CHUCK Ø210 Ø254 Ø304

Serration Pitch 1.5mm * 60° 單位/UNIT:mm

規格 Size	型號 Model	C1	C2	C3	C4	C5	C6	C7	C9	C10	C11	C13	C15	M	毛重 Weight Kg/set
HO-08	081638H	95	35	38	16	5	24	25	19	13	23	16	120°	M12	2.4
	081650H	95	35	50	16	5	24	25	19	13	35	16	120°	M12	3.2
HO-10	101842H	110	40	42	18	5	30	30	23	16	27	18	120°	M14	3.7
	101850H	110	40	50	18	5	30	30	23	16	35	18	120°	M14	4
HO-12	122150HF	129	50	50	21	6	39	35	26	17	30	22	120°	M16	6.2
	122180HF	129	50	80	21	6	39	35	26	17	60	22	120°	M16	10

HO-15

材質:中碳鋼 Steel S50C

鋸齒狀節距 3.0mm * 60°

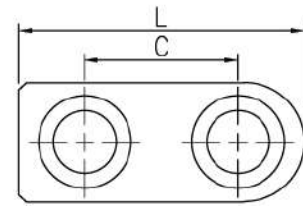
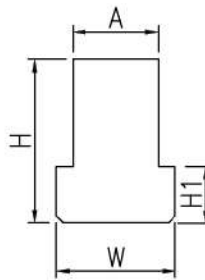
SOFT JAWS FOR HYDRAULIC CHUCKS
CHUCK Ø381

Serration Pitch 3.0mm * 60° 單位/UNIT:mm

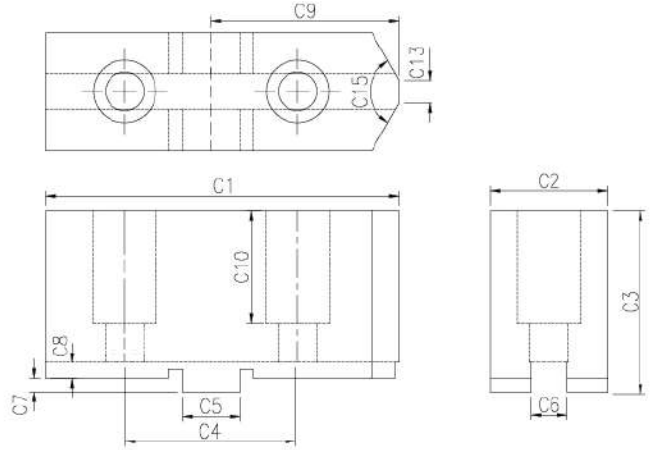
規格 Size	型號 Model	C1	C2	C3	C4	C5	C6	C7	C9	C10	C11	C13	C15	M	毛重 Weight Kg/set
HO-15	152660H	135	50	60	26	8	37	43	32	21	35	-	-	M20	9.5
	1526100H	135	50	100	26	8	37	43	32	21	75	-	-	M20	17.2

夾頭型號 Chunk number	共用夾頭型號 Compatible Chunk number									
HO1MA	4	HO24M5								
	6	(HO7MA6)	HO22M6	HO23M8	HO24M6	(HO27M6)	HO34M6	HO37M6	HO5M6	HO32M8
	8	(HO7MA8)								
	15	HO1MA18~24								
HO5M	8	(MO7MA10)	HO22M8	HO23M10	HO24M8	(HO27M8)	HO34M8	HO37M8	HO32M10	
	10	(HO7MA12)	HO22M10	HO23M12	HO24M10	(HO27M10)	HO34M10	HO37M10	HO32M12	
	12	(HO7MA15)	HO22M12	HO23M15	HO24M12					
HO27M	4	HO27M5						HO32M6		
HO37M	12	(HO27M12)				HO34M12				

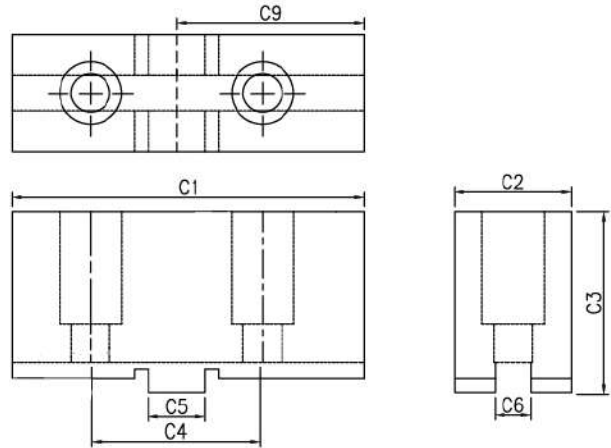
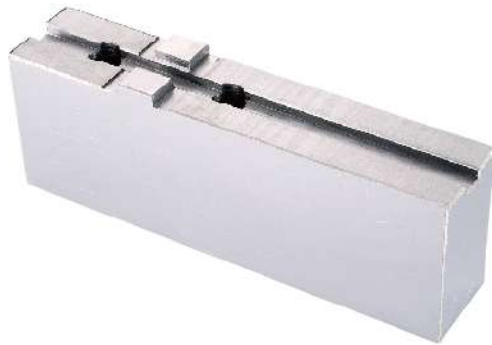
材質:紅十字(SCM440)



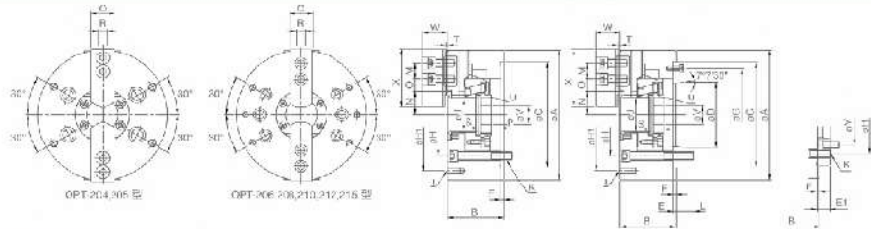
夾頭型號 Chunk number	L	W	H	H1	A	C	M	毛重 Weight Kg/set
HO1MA	4	25.5	15	16.5	5.5	10	M8	0.09
	5	30.5	15	16.5	5.5	10	M8	0.1
	6	37	17	21.5	7.5	12	M10	0.18
	8	46	20	23.5	8.5	14	M12	0.29
	10	51	23	23.5	8.5	16	M12	0.42
	12	53	28	33	14	18	M14	0.79
	15	82	34	40	17	26	M20	1.68
HO5M	8	45	22	26.5	8.5	16	M12	0.36
	10	52	24	27.5	9.5	18	M14	0.48
	12	65	27	29	10.5	21	M16	0.76
HO27M	4.5	29	16	16.5	6.5	11	M8	0.11
HO37M	12	60	27	29	10.5	21	M16	0.73
HO27M	15	74	34	40	17	26	M20	1.60



規格 Size	型號 Model	C1	C2	C3	C4	C5	C6	C7	C8	C9	C10	C13	C15	M	毛重 Weight Kg/set
SK-4	SK0430	52	19	30	24	9.53	7.94	2.5	3	26	21	3	120°	M6	0.5
SK-5	SK0535	62	27	35	32	12.68	7.94	3	3.5	31	24	3	120°	M8	1
SK-06 (M8)	SK0637-8	78	27	37	38.1	12.68	7.94	3	3.5	41.5	25	5	120°	M8	1.3
	SK0650-8	78	27	50	38.1	12.68	7.94	3	3.5	41.5	38	5	120°	M8	1.8
	SK0660-8	78	27	60	38.1	12.68	7.94	3	3.5	41.5	48	5	120°	M8	2.2
	SK0680-8	78	27	80	38.1	12.68	7.94	3	3.5	41.5	68	5	120°	M8	3.1
	SK06100-8	78	27	100	38.1	12.68	7.94	3	3.5	41.5	88	5	120°	M8	4.2
SK-07 (SK-08)	SK0748	95	31	48	44.45	12.68	7.94	3	3.5	47.5	35	10	120°	M10	2.7
	SK0760	95	31	60	44.45	12.68	7.94	3	3.5	47.5	47	10	120°	M10	3.4
	SK0770	95	31	70	44.45	12.68	7.94	3	3.5	47.5	57	10	120°	M10	4
	SK0748*120	95	31	48	44.45	12.68	7.94	3	3.5	57.5	35	3	120°	M10	2.6
	SK0760*120	95	31	60	44.45	12.68	7.94	3	3.5	57.5	47	3	120°	M10	3.3
	SK0770*120	95	31	70	44.45	12.68	7.94	3	3.5	57.5	57	3	120°	M10	3.9
SK-09 (SK-10)	SK0950	110	37	50	54	19.03	12.7	3	3.5	55	36	14	120°	M12	4
	SK0960	110	37	60	54	19.03	12.7	3	3.5	55	46	14	120°	M12	5.1
	SK0970	110	37	70	54	19.03	12.7	3	3.5	55	56	14	120°	M12	5.4
	SK0950*120	110	37	50	54	19.03	12.7	3	3.5	65	36	3	120°	M12	3.8
	SK0960*120	110	37	60	54	19.03	12.7	3	3.5	65	46	3	120°	M12	4.9
	SK0970*120	110	37	70	54	19.03	12.7	3	3.5	65	56	3	120°	M12	5.2
SK-12	SK1250	125	40	50	63.5	19.03	12.7	3	3.5	62.5	36	17	120°	M12	5
	SK1260	125	40	60	63.5	19.03	12.7	3	3.5	62.5	46	17	120°	M12	6
	SK1270	125	40	70	63.5	19.03	12.7	3	3.5	62.5	56	17	120°	M12	7
	SK1250*120	125	40	50	63.5	19.03	12.7	3	3.5	72.5	36	3	120°	M12	4.9
	SK1260*120	125	40	60	63.5	19.03	12.7	3	3.5	72.5	46	3	120°	M12	5.9
SK-16 (SK-15)	SK1670	160	50	70	76.2	19.03	12.7	6	5.5	80	48	-	120°	M16	10.7
	SK16100	160	50	100	76.2	19.03	12.7	6	5.5	80	78	-	120°	M16	15.3
SK-20	SK2070	160	50	70	76.2	19.03	12.7	6	5.5	80	48	-	120°	M20	10.5



規格 Size	型號 Model	C1	C2	C3	C4	C5	C6	C9	M	毛重 Weight Kg/set
SK-06 (M8)	SK06110L31W40	110	31	40	38.1	12.68	7.94	73.5	M8	2.8
	SK06110L31W60	110	31	60	38.1	12.68	7.94	73.5	M8	3.9
SK-07 (SK-08)	SK07130L40W50	130	40	50	44.45	12.68	7.94	82.5	M10	5.5
	SK07150L40W50	150	40	50	44.45	12.68	7.94	102.5	M10	6
	SK07150L40W60	150	40	60	44.45	12.68	7.94	102.5	M10	7.5
SK-09 (SK-10)	SK09150L40W50	150	40	50	54	19.03	12.7	95	M12	6.3
	SK09150L40W60	150	40	60	54	19.03	12.7	95	M12	7.5
	SK09180L40W60	180	40	60	54	19.03	12.7	125	M12	9
	SK09180L40W80	180	40	80	54	19.03	12.7	125	M12	12
	SK09200L40W60	200	40	60	54	19.03	12.7	145	M12	9.9
	SK09230L40W70	230	40	70	54	19.03	12.7	175	M12	13.8
SK-12	SK12150L40W50	150	40	50	63.5	19.03	12.7	87.5	M12	6
	SK12150L40W60	150	40	60	63.5	19.03	12.7	87.5	M12	7.5
	SK12180L40W60	180	40	60	63.5	19.03	12.7	117.5	M12	9
	SK12200L40W60	200	40	60	63.5	19.03	12.7	137.5	M12	9.9
	SK12220L50W75	220	50	75	63.5	19.03	12.7	157.5	M12	17.4
	SK12280L50W60	280	50	60	63.5	19.03	12.7	217.5	M12	18
	SK12290L50W70	290	50	70	63.5	19.03	12.7	227.5	M12	21.9
SK-16 (SK-15)	SK16250L50W70	250	50	70	76.2	19.03	12.7	170	M16	17.7
	SK16300L50W70	300	50	70	76.2	19.03	12.7	220	M16	22.5

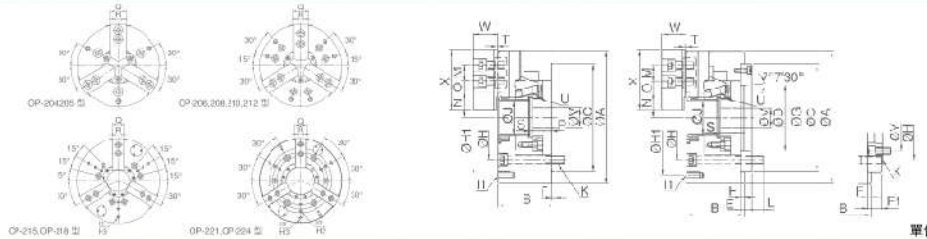


單位/UNIT:mm

型式/規格 MODEL/SPEC.	主軸齒輪番號 Nose O.D. Symbol	A	B	C (h6)	D	E	E1	F	G	H	H1	I	J	K	L
OPT-204	---	110	59	85	---	---	---	4	---	70.6	---	---	26	4-M10x1.5P	---
OPT-205	A ₂ -4	135	60	110	63.513	20	---	4	96	82.6	PCDØ118	4-M8x1.25P	33	4-M10x1.5P	15
OPT-206	A ₂ -5	169	81	140	82.563	15	---	5	116	104.8	PCDØ145	6-M10x1.5P	45	6-M10x1.5P	16
OPT-208	A ₂ -6 (A ₂ -5)	210	91	170	106.375	17	23	5	150	133.4	PCDØ180	6-M10x1.5P	52	6-M12x1.75P	18
OPT-210	A ₂ -8 (A ₂ -6)	254	100	220	139.719	18	28	5	190	171.4	PCDØ225	6-M12x1.75P	75	6-M16x2P	23
OPT-212	A ₂ -8	304	110	220	139.719	18	---	6	190	171.4	PCDØ250	6-M12x1.75P	91	6-M16x2P	25
OPT-215	A ₂ -8 (A ₂ -6)	381	133	300	196.869	22	33	6	260	235	PCDØ324	6-M12x1.75P	117.5	6-M20x2.5P	28

型式/規格 MODEL/SPEC.	M	N	N	O	O	P	P	Q	R	S	T	U	V	W	X	Y	通孔直徑 Thru-Hole (Ø) (mm)	柱塞行程 Plunger Stroke (mm)
OPT-204	14	23	20.3	11.5	6.7	3.5	-6.5	23	10	17.5	2	M32x1.5P	12	24	49.5	---	26	10
OPT-205	14	26.2	23.5	19	6	1	-9	25	10	20	2	M40x1.5P	12	31.5	62	---	33	10
OPT-206	20	32.35	29.6	24	7	11	-1	31	12	19	2	M55x2P	20	37.5	73	---	45	12
OPT-208	25	39.1	35.4	30	10	14.5	-1.5	35	14	20.5	2	M60x2P	30	39.5	95	104.8	52	16
OPT-210	30	51.5	47.1	34	12	8.5	-10.5	40	16	25	2	M85x2P	40	43	110	133.4	75	19
OPT-212	30	61.6	56.3	46	12	8	-15	50	21	28	2	M100x2P	50	51	129	---	91	23
OPT-215	43	82.3	77	46	13	7.5	-16	62	22	42.5	2	M130x2P	48	66.5	165	117.5	117.5	23

型式/規格 MODEL/SPEC.	爪行程 (齒徑) Jaw Stroke (Ø) (mm)	最高迴轉速 Max. Speed (r.p.m.)	最大拉力 Max. Pull Force (kg)	最大夾持力 Max. Gripping Force (kg)	最大設定油壓壓力 Max. Hydr. Pressure Setting (MPa)	淨重 Net Weight (kg)	搭配 油壓缸型號 Matching Cylinder	夾持範圍 Gripping Range
OPT-204	5.4	8000	920	1930 (19)	15.5 (1.5)	M32x1.5P	P0928	Ø7-Ø110
OPT-205	5.4	7000	1120 (11)	2340 (23)	19 (1.9)	M40x1.5P	P1036	Ø10-Ø135
OPT-206	5.5	6000	1420 (14)	3770 (37)	18.5 (1.8)	M55x2P	P1246	Ø13-Ø169
OPT-208	7.4	5000	2240 (22)	5710 (56)	17 (1.7)	M60x2P	P1552	Ø13-Ø210
OPT-210	8.8	4200	2850 (28)	7440 (73)	18 (1.8)	M85x2P	P1875	Ø30-Ø254
OPT-212	10.6	3300	3670 (36)	9690 (95)	18 (1.8)	M100x2P	P2091	Ø35-Ø304
OPT-215	10.6	2500	4790 (47)	12130 (119)	17 (1.7)	M130x2P	P2511	Ø35-Ø381



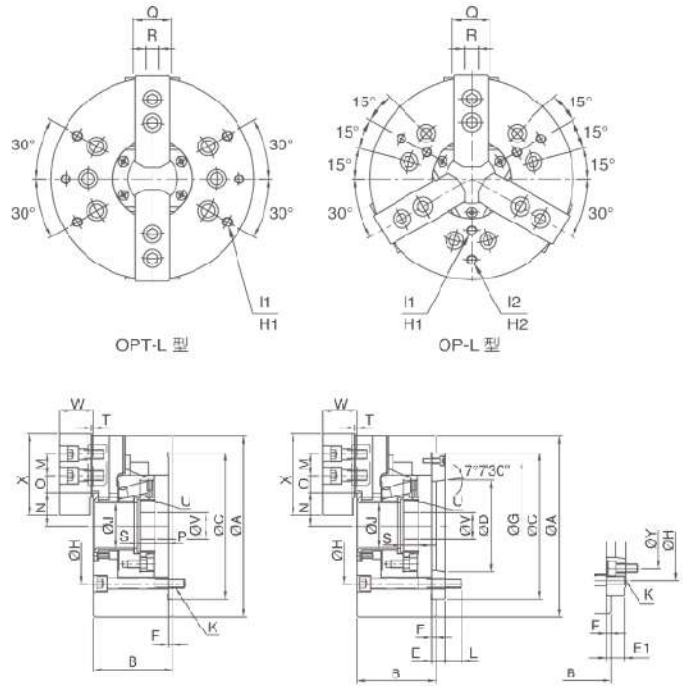
單位/UNIT:mm

型式/規格 MODEL/SPEC.	主軸齒輪番號 Nose O.D. Symbol	A	B	C (h6)	D	E	E1	F	G	H	H1	I1	H2	I2	H3
OP-204	---	110	59	85	---	---	---	4	---	70.6	---	---	---	---	---
OP-205	A ₂ -4	135	60	110	63.513	20	---	4	96	82.6	PCDØ118	3-M8x1.25P	---	---	---
OP-206	A ₂ -5	169	81	140	82.563	15	---	5	116	104.8	PCDØ145	6-M10x1.5P	---	---	---
OP-208	A ₂ -6 (A ₂ -5)	210	91	170	106.375	17	23	5	150	133.4	PCDØ180	6-M10x1.5P	---	---	---
OP-210	A ₂ -8 (A ₂ -6)	254	100	220	139.719	18	28	5	190	171.4	PCDØ225	6-M12x1.75P	---	---	---
OP-212	A ₂ -8	304	110	220	139.719	18	---	6	190	171.4	PCDØ250	6-M12x1.75P	---	---	---
OP-215	A ₂ -11 (A ₂ -8)	381	133	300	196.869	22	33	6	260	235	---	---	PCDØ230	3-M12x1.75P	PCDØ300
OP-218	A ₂ -11 (A ₂ -8)	450	133	300	196.869	22	33	6	260	235	PCDØ230	3-M12x1.75P	PCDØ300	3-M12x1.75P	PCDØ380
OP-221	A ₂ -15 (A ₂ -11)	530	140	380	285.775	27	41	6	330.2	330.2	PCDØ300	3-M16x2P	PCDØ380	3-M16x2P	PCDØ460
OP-224	A ₂ -20 (A ₂ -15)	610	149	520	412.745	27	42	6	463.6	463.6	PCDØ350	3-M16x2P	PCDØ450	3-M16x2P	PCDØ550
OP-210BH	A ₂ -8 (A ₂ -6)	254	100	220	139.719	18	28	5	190	190	---	---	PCDØ160	3-M12x1.75P	PCDØ220
OP-212BH	A ₂ -8	304	108	220	139.719	18	---	6	190	190	---	---	PCDØ170	3-M16x2P	PCDØ260

型式/規格 MODEL/SPEC.	I3	J	K	L	M	N	N	O	O	P	P	Q	R	S	T	U	V	W	X
OP-204	---	26	3-M10x1.5P	---	14	23	20.3	11.5	6.7	3.5	-6.5	23	10	17.5	2	M32x1.5P	12	24	49.5
OP-205	---	33	3-M10x1.5P	15	14	26.2	23.5	19	6	1	-9	25	10	20	2	M40x1.5P	12	31.5	62
OP-206	---	45	6-M10x1.5P	16	20	32.35	29.6	24	7	11	-1	31	12	19	2	M55x2P	20	37.5	73
OP-208	---	52	6-M12x1.75P	18	25	39.1	35.4	30	10	14.5	-1.5	35	14	20.5	2	M60x2P	30	39.5	95
OP-210	---	75	6-M16x2P	23	30	51.5	47.1	34	12	8.5	-10.5	40	16	25	2	M85x2P	40	43	110
OP-212	---	91	6-M16x2P	25	30	61.6	56.3	46	12	8	-15	50	21	28	2	M100x2P	50	51	129
OP-215	3-M12x1.75P	117.5	6-M20x2.5P	28	43	82.3	77	46	13	7.5	-16	62	22	42.5	5	M130x2P	48	66.5	165
OP-218	3-M12x1.75P	120	6-M20x2.5P	28	43	83.8	78.5	78	18	7.5	-16	62	22	42.5	5	M130x2P	48	66.5	165
OP-221	3-M16x2P	180	6-M24x3P	35	60	119.6	114.3	63.3	21.3	10.5	-13	65	25	42.5	5	M195x2P	80	73.5	180
OP-224	3-M16x2P	205	6-M24x3P	36	60	134.4	128.4	87.3	21.3	13.5	-11	65	25	41	5	M220x3P	80	73.5	180
OP-210BH	3-M12x1.75P	78	6-M16x2P	24	30	53.1	48.6	33.55	11.05	8.95	-10.55	40	16	25	2	M87x2P	40	43	110
OP-212BH	3-M16x2P	93	6-M16x2P	27	30	63.7	58.7	45.55	12.55	8.65	-13.05	50	21	26	2	M103x2P	50	51	129

型式/規格 MODEL/SPEC.	Y	通孔直徑 Thru-Hole (Ø) (mm)	柱塞行程 Plunger Stroke (mm)	爪行程 (齒徑) Jaw Stroke (Ø) (mm)	最高迴轉速 Max. Speed (r.p.m.)	最大拉力 Max. Pull Force (kg)	最大夾持力 Max. Gripping Force (kg)	最大設定油壓壓力 Max. Hydr. Pressure Setting (MPa)	淨重 Net Weight (kg)	搭配 油壓缸型號 Matching Cylinder	夾持範圍 Gripping Range
OP-204	---	26	10	5.4	8000	1428 (14)	2850 (28)	24 (2.3)	3.8	P0928	Ø7-Ø110
OP-205	---	33	10	5.4	7000	1730 (17)	3570 (35)	29 (2.8)	6.1	P1036	Ø10-Ø135
OP-206	---	45	12	5.5	6000	2140 (21)	5710 (56)	28 (2.7)	12.5	P1246	Ø13-Ø169
OP-208	104.8	52	16	7.4	5000	3360 (33)	8360 (82)	26 (2.5)	21.9	P1552	Ø13-Ø210
OP-210	133.4	75	19	8.8	4200	4280 (42)	11010 (108)	27 (2.6)	33.7	P1875	Ø30-Ø254
OP-212	---	91	23	10.6	3300	5500 (54)	14380 (141)	27 (2.6)	55.3	P2091	Ø35-Ø304
OP-215	171.4	117.5	23	10.6	2500	7140 (70)	18250 (179)	24.5 (2.4)	106.8	P2511	Ø35-Ø381
OP-218	171.4	120	23	10.6	2000	7140 (70)	18250 (179)	24.5 (2.4)	152	P2511	Ø40-Ø450
OP-221	235	180	23	10.6	1700	9080 (89)	23760 (233)	23.5 (2.3)	195.2	P3420	Ø115-Ø530
OP-224	330.2	205	26	12	1400	9080 (89)	23760 (233)	23.5 (2.3)	269.4	P3420	Ø140-Ø610
OP-210BH	133.4	78	19.5	9	4200	4280 (42)	11010 (108)	27 (2.6)	36.7	P1878	Ø30-Ø254
OP-212BH	---	93	21	10	3300	5500 (54)	14380 (141)	28 (2.7)	57.4	P2093	Ø35-Ø304

尺寸圖 » Dimensions



規格表 » Specifications

單位/UNIT:mm

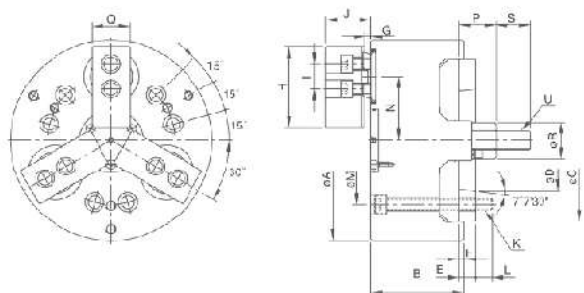
型式/規格 MODEL/SPEC.	主軸鼻端番號 Nose Of Spindle	A	B	C (h6)	D	E	E1	F	G	H	H1	I1	
OP-206L	A ₂ -5	173	87	140	82.563	15	--	5	116	104.8	PCDØ90	3-M8x1.25P	
OP-208L	A ₂ -6 (A ₂ -5)	215	103	170	106.375	17	23	5	150	133.4	PCDØ120	3-M8x1.25P	
OP-210L	A ₂ -8 (A ₂ -6)	256	112	220	139.719	18	28	5	190	171.4	PCDØ160	3-M12x1.75P	
OPT-206L	A ₂ -5	173	87	140	82.563	15	--	5	116	104.8	PCDØ145	6-M10x1.5P	
OPT-208L	A ₂ -6 (A ₂ -5)	215	103	170	106.375	17	23	5	150	133.4	PCDØ180	6-M10x1.5P	
OPT-210L	A ₂ -8 (A ₂ -6)	256	112	220	139.719	18	28	5	190	171.4	PCDØ225	6-M12x1.75P	
型式/規格 MODEL/SPEC.	H2	I2	J	K	L	M	N max.	N min.	O max.	O min.			
OP-206L	PCDØ140	3-M8x1.25P	45	6-M10x1.5P	15	20	39.07	33.46	21.05	10.55			
OP-208L	PCDØ170	3-M8x1.25P	52	6-M12x1.75P	21	25	47.85	39.66	25.05	13.05			
OP-210L	PCDØ220	3-M12x1.75P	75	6-M16x2P	22	30	61.34	52.06	29.05	12.55			
OPT-206L	--	--	45	6-M10x1.5P	15	20	39.07	33.46	21.05	10.55			
OPT-208L	--	--	52	6-M12x1.75P	21	25	47.85	39.66	25.05	13.05			
OPT-210L	--	--	75	6-M16x2P	22	30	61.34	52.06	29.05	12.55			
型式/規格 MODEL/SPEC.	P max.	P min.	Q	R	S	T	U	V	W	X	Y	通孔直徑 Thru-Hole [Diameter] (mm)	柱塞行程 Plunger Stroke (mm)
OP-206L	11	-4	31	12	19	2	M55x2P	20	37.5	73	--	45	15
OP-208L	14.5	-7.5	35	14	20.5	2	M60x2P	30	39.5	95	104.8	52	22
OP-210L	8.5	-16.5	40	16	25	2	M85x2P	40	43	110	133.4	75	25
OPT-206L	11	-4	31	12	19	2	M55x2P	20	37.5	73	--	45	15
OPT-208L	14.5	-7.5	35	14	20.5	2	M60x2P	30	39.5	95	104.8	52	22
OPT-210L	8.5	-16.5	40	16	25	2	M85x2P	40	43	110	133.4	75	25
型式/規格 MODEL/SPEC.	爪行程 (直徑) Jaw Stroke [Diameter] (mm)	最高迴轉速 Max. Speed r.p.m (min ⁻¹)	最大拉力 Max. Pull Force kgf (KN)	最大靜夾持力 Max. Gripping Force kgf (KN)	最大設定油壓壓力 Max. Hydr. Pressure kgf/cm ² (Mpa)	淨重 Weight (kg)	搭配 油壓缸型號 Matching Cylinder	夾持範圍 Gripping Range					
OP-206L	10.8	4300	2140 (21)	4080 (40)	28 (2.7)	14.9	P1246	Ø20-Ø173					
OP-208L	16	3500	3360 (33)	5910 (58)	26 (2.5)	37	P1552	Ø25-Ø215					
OP-210L	18	3000	4280 (42)	7540 (74)	27 (2.6)	40.6	P1875	Ø40-Ø256					
OPT-206L	10.8	4300	1420 (14)	2650 (26)	18.5 (1.8)	14.5	P1246	Ø20-Ø173					
OPT-208L	16	3500	2240 (22)	3870 (38)	17 (1.7)	26.4	P1552	Ø25-Ø215					
OPT-210L	18	3000	2850 (28)	4990 (49)	18 (1.8)	39.5	P1875	Ø40-Ø256					



後拉式油壓夾頭作徑向夾持同時強力後拉，工作不會上浮，適用於鑄件及鍛件的加工。

1. 後拉式夾持將工作緊貼在基準面上，使夾持穩固，適於重切削。
2. 圓柱滑動結構，可長期使用，並確保重複夾持的優異精度。
3. 準確的自定中心及強力夾持工件不上浮特性，要求長度精準的加工最適宜。
4. 可採用到位偵測，配合自動化系統。

尺寸圖 >> Dimensions



Pull back feature of radial gripping will lead to almost no work piece uplifting displacement:
CHANDOX Pull Back Power Chucks are ideal for machining casting and forging parts:

1. By appressing the gripped work piece to the surface, CHANDOX Pull Back Power Chucks are suitable for heavy machining.
2. Chuck Actuators with cylindrical structure are durable and ensures high gripping repeatability.
3. Accurate self-centering and pull back features are adequate for precise length control machining requirements.
4. Optional components can be selected for detecting the right position on an automated loading machine.

尺寸圖 >> Dimensions

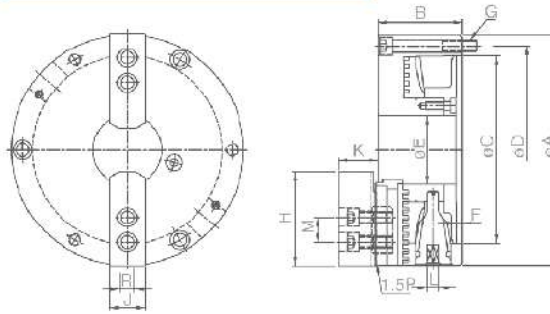
單位/UNIT:mm

型式/規格 MODEL/SPEC.	A	B	C	D	E	F	G max.	G min.	H	J max.	J min.
PL-06	169	83	140	82.563	15	5	15	5	70	46	36
PL-08	210	97	170	106.375	17	5	16.5	6.5	84	57	47
PL-10	254	110	220	139.719	18	5	22	6	100	68	52
PL-12	304	125	220	139.719	18	5	21.5	5.5	120	72.5	56.5
型式/規格 MODEL/SPEC.	I	K	L	M	N max.	N min.	P max.	P min.	Q	R	
PL-06	--	6-M10x1.5P	14	104.8	56.65	54	33	23	35	32	
PL-08	26	6-M12x1.75P	17	133.4	69.65	67	38	28	40	38	
PL-10	32	6-M16x2P	24	171.4	87.8	82	48	32	50	50	
PL-12	36	6-M16x2P	20	171.4	102.8	97	47	31	60	52	
型式/規格 MODEL/SPEC.	S	U	柱塞行程 Plunger Stroke (mm)	爪行程〔直徑〕 Jaw Stroke 〔Diameter〕 (mm)	最高迴轉速 Max. Speed r.p.m (min ⁻¹)	最大拉力 Max. Pull Force (KN)					
PL-06	36	M16x2P	10	5.3	3500	1420 (14)					
PL-08	36	M20x2.5P	10	5.3	3000	2240 (22)					
PL-10	46	M24x3P	16	11.6	2500	3160 (31)					
PL-12	50	M27x3P	16	11.6	2000	4480 (44)					
型式/規格 MODEL/SPEC.	最大靜夾持力 Max. Gripping Force Kgf (KN)	最大設定油壓壓力 Max. Hydr. Pressure kgf/cm ² (Mpa)	淨重 Weight (kg)	搭配 油壓缸型號 Matching Cylinder	夾持範圍 Gripping Range						
PL-06	2950 (29)	22 (2.2)	15.4	L1020	Ø35-Ø160						
PL-08	4890 (48)	22 (2.2)	27.8	L1225	Ø40-Ø210						
PL-10	4990 (49)	30 (2.9)	45.9	L1225	Ø50-Ø254						
PL-12	7240 (71)	30 (2.9)	75.7	L1530	Ø50-Ø304						

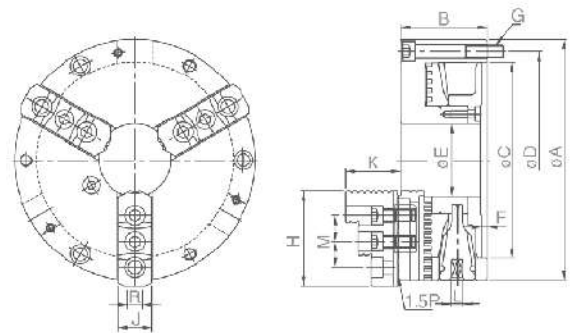


1. 可替代修整油壓生爪成型盤。
2. 爪仔可前後任意調整，加大夾持工件範圍。
3. 生爪及硬爪與CNC車床油壓爪共用。
4. 鋼殼結構於高速迴轉時安全性高，耐磨性強，使用壽命長。
5. 轉動板手扭力較小操作順暢。
6. 兩爪夾頭僅提供強力生爪。

尺寸圖 >> Dimensions



1. Can be used as a "Forming plate" for machining soft jaws.
2. Hard jaws and soft jaws can be adjusted just like on a power chuck to increase the gripping range.
3. Hard jaws as well as soft are interchangeable with those of power chucks.
4. Chuck Body is made of steel to enhance safety operations for high speed machining.
5. The Chuck Handle can be operated easily and smoothly.
6. 2-jaw Steel Body only provide the powerful type soft jaws.



特點配合圖示說明 >> Illustrate



可替代修整油壓生爪成型盤

The chuck can be used as a "Forming plate" for machining soft jaws.



爪仔可前後任意調整加大夾持工件範圍

Top jaws can be adjusted back and forth easily, thus increasing gripping range.



硬爪與油壓夾盤硬爪共用

Hard jaws are interchangeable with those of power chucks.



生爪與油壓夾盤生爪共用

Soft jaws are interchangeable with those of power chucks.

選配附件



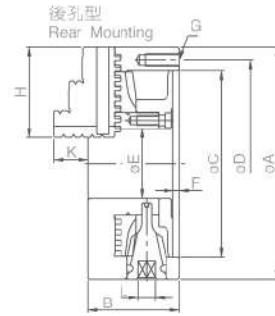
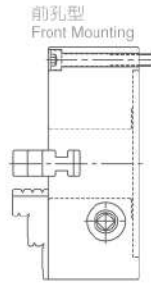
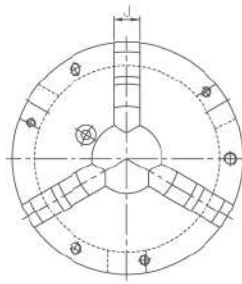
連結盤

Optional accessory: Mounting plate

單位:UNT:mm

TNT 型式/規格 MODEL/SPEC.	A	B	C	D	E	F	G	H	J	K	L	M	R	最高轉速 Max.Speed r.p.m.(min ⁻¹)	把握範圍 Max.Gripping Diameter 外徑把握 (O.D.Clamping (mm))	內徑把握 (I.D.Clamping (mm))	淨重 Weight (kg)
TNT-07	193	78	155	172	58	5	3-M10x1.5P	73	31	38	11	20	12	3200	Ø8~Ø235	Ø66~Ø235	14.4
TNT-09	233	85	190	210	70	5.5	3-M12x1.75P	95	35	40	12	25	14	2800	Ø11~Ø280	Ø85~Ø280	22.3
NT 型式/規格 MODEL/SPEC.																	
NT-07	193	78	155	172	58	5	3-M10x1.5P	78	28	46	11	20	12	3200	Ø8~Ø235	Ø66~Ø235	13.1
NT-09	233	85	190	210	70	5.5	3-M12x1.75P	92	32	52	12	25	14	2800	Ø11~Ø280	Ø85~Ø280	21.2
NT-10	275	91	230	250	89	5.5	3-M12x1.75P	101.5	37	56	12	30	16	2400	Ø12~Ø330	Ø92~Ø330	30.5
NT-12	310	104	260	285	105	7	3-M12x1.75P	116	47	67	14	30	21	2100	Ø15~Ø370	Ø104~Ø370	46.1

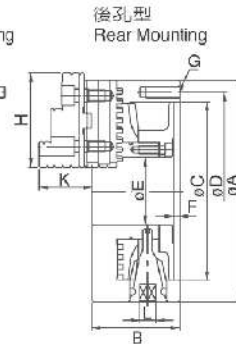
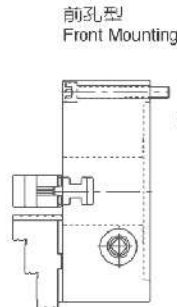
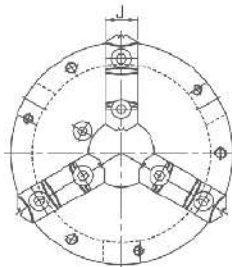
尺寸圖 » Dimensions



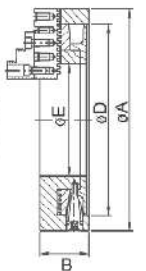
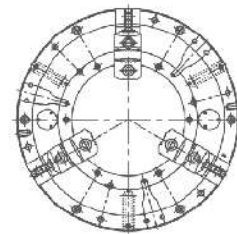
單位/UNIT:mm

型式/規格 MODEL/SPEC.	A	B	C	D	E	F	G	H	J	K	L	最高轉速 Max Speed r.p.m.(min ⁻¹)	把握範圍 Max. Gripping Diameter		淨重 Weight (kg)
													外徑把握 O.D. Clamping (mm)	內徑把握 I.D. Clamping (mm)	
SC-03	85	45	60	73	16	3.5	3-M6x1P	35	11	15	7	3200	Ø8~Ø235	Ø66~Ø235	14.4
SC-04	112	58	80	95	24	4.5	3-M8x1.25P	42	14	17	8	2800	Ø11~Ø280	Ø85~Ø280	22.3
SC-05	132	60	100	115	32	4.5	3-M8x1.25P	50	16	20	8	3200	Ø8~Ø235	Ø66~Ø235	14.4
SC-06	167	66	130	147	45	5	3-M10x1.5P	65	19	23	10	2800	Ø11~Ø280	Ø85~Ø280	22.3
SC-07	193	76	155	172	58	5	3-M10x1.5P	75	22	28	11	2800	Ø11~Ø280	Ø85~Ø280	22.3
SC-08	203	76	160	176	58	5	3-M10x1.5P	75	22	28	11	3200	Ø8~Ø235	Ø66~Ø235	13.1
SC-09	233	84	190	210	70	5.5	3-M12x1.75P	85	24	34.5	12	2800	Ø11~Ø280	Ø85~Ø280	21.2
SC-10	273	86	230	250	89	5.5	3-M12x1.75P	98	28	39	12	2400	Ø12~Ø330	Ø92~Ø330	30.5
SC-12	310	96	260	285	105	7	3-M12x1.75P	110	30	45	14	2100	Ø15~Ø370	Ø104~Ø370	46.1
SC-14	355	112	300	328	127	7	6-M12x1.75P	132	35	50	15	2400	Ø12~Ø330	Ø92~Ø330	30.5
SC-16	405	122	345	375	160	8	6-M14x2P	146	40	56	15	2100	Ø15~Ø370	Ø104~Ø370	46.1

尺寸圖 » Dimensions



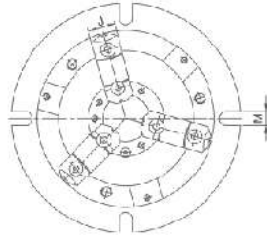
SKB型



單位/UNIT:mm

型式/規格 MODEL/SPEC.	A	B	C	D	E	F	G	H	J	K	L	最高轉速 Max Speed r.p.m.(min ⁻¹)	把握範圍 Max. Gripping Diameter		淨重 Weight (kg)
													外徑把握 O.D. Clamping (mm)	內徑把握 I.D. Clamping (mm)	
SK-04	112	58	80	95	24	4.5	3-M8x1.25P	47	19	31.5	8	2500	Ø3~Ø100	Ø35~Ø93	3.45
SK-05	132	60	100	115	32	4.5	3-M8x1.25P	57	24	36	8	2500	Ø3~Ø123	Ø43~Ø122	5.0
SK-06	167	66	130	147	45	5	3-M10x1.5P	68	26	39	10	2000	Ø8~Ø160	Ø55~Ø150	8.6
SK-07	193	76	155	172	58	5	3-M10x1.5P	82	28	43	11	2000	Ø8~Ø180	Ø62~Ø170	12.8
SK-08	203	76	160	176	58	5	3-M10x1.5P	82	28	43	11	2000	Ø8~Ø180	Ø62~Ø170	14.1
SK-09	233	84	190	210	70	5.5	3-M12x1.75P	93	32	50	12	2000	Ø11~Ø220	Ø70~Ø210	20.4
SK-10	273	86	230	250	89	5.5	3-M12x1.75P	102	35	54.5	12	1800	Ø12~Ø260	Ø80~Ø250	26.7
SK-12	310	96	260	285	105	7	3-M12x1.75P	118	40	56	14	1800	Ø15~Ø300	Ø90~Ø290	39.3
SK-14	355	122	300	328	127	7	6-M12x1.75P	139	45	70.5	15	1500	Ø25~Ø350	Ø110~Ø320	60.7
SK-16	405	122	345	375	160	8	6-M14x2P	150	50	75	15	1500	Ø30~Ø400	Ø110~Ø380	82.3
SK-20	500	140	420	458	205	5.5	6-M16x2P	140	55	84	19	1000	Ø25~Ø480	Ø125~Ø460	145.5
SK-25	630	140	545	586	275	6.5	6-M16x2P	140	70	92	19	850	Ø80~Ø630	Ø198~Ø501	221.3
SKB-25	630	140	545	586	320	6.5	6-M16x2P	140	70	92	19	850	Ø160~Ø630	Ø274~Ø646	208.5

尺寸圖 » Dimensions



1. 把手和盤面成30°角，旋轉操作更便利。
2. 薄型設計，可增加機械加工之容許長度。
3. 外徑成凸緣設計，裝卸容易。
4. 強力型設計可共用生爪。

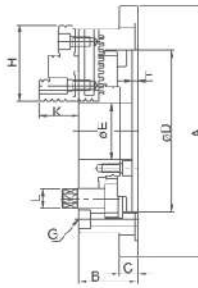
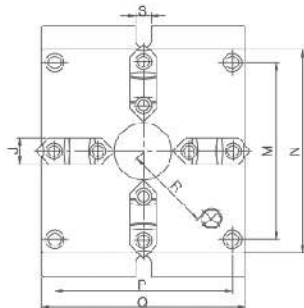
1. The handle with an angle of 30 degrees is much convenient for operations.
2. The "super thin thickness" design of chucks increase the "allowable distance" of machining operations.
3. Chuck flange makes loading and unloading operations simpler and more convenient.
4. Hard jaws and Doft jaws can be used alternatively.

單位/UNIT:mm

型式/規格 MODEL/SPEC.	A1	A2	B1	B2	C	D	E	F	G
NBK-06	220	170	58	18	130	147	45	6	3-M10x1.5P
NBK-08	270	210	65	20	155	172	60	6	3-M10x1.5P
NBK-10	315	255	73	20	190	210	80	6	3-M12x1.75P
NBK-12	370	305	80	22	250	285	105	5	3-M12x1.75P

型式/規格 MODEL/SPEC.	H	J	K	L	M	把握範圍 Max. Gripping Diameter		淨重 Weight (kg)
						外徑把握 O.D. Clamping (mm)	內徑把握 I.D. Clamping (mm)	
NBK-06	68	26	40	10	13	Ø8~Ø160	Ø48~Ø150	10.6
NBK-08	82	28	43	11	13	Ø11~Ø200	Ø62~Ø190	18.1
NBK-10	93	32	52	12	16	Ø12~Ø250	Ø72~Ø240	27.9
NBK-12	118	40	59	14	18	Ø15~Ø300	Ø86~Ø290	42.9

尺寸圖 » Dimensions



1. MC均為定寸研磨方式;任何相同規格之方型夾盤W,X,Y,Z各點之高度公差為0.05mm以內。
2. MC規格均可替換生爪，作不規則形狀之加工，以替代中心機大量治具，更經濟、方便。
3. 硬爪重複夾持之精度公差為0.02mm以內。
4. 側邊平行校正後，硬爪夾持之平行公差為0.05mm以內。

1. MC chucks are precisely ground, the tolerances of W,X,Y,Z among chucks are within 0.05mm.
2. Soft jaws can be used alternatively for machining special shaped work pieces, to substitute for designing and making a lot of jigs for this purpose.
3. The repetitive gripping accuracy with the hard jaws are within 0.02mm.
4. Parallel gripping accuracy with hard jaws can be controlled within 0.05mm after aligning sides of chucks.

單位/UNIT:mm

型式/規格 MODEL/SPEC.	A	B	C	D	E	F	G	H	J	K	L
MC-06	215	57	18	130	40	5.5	4-M10x1.5P	68	26	39	14
MC-08	250	65	20	160	55	6	4-M12x1.75P	82	28	43	17
MC-10	310	72	22	200	70	6	4-M14x2P	93	32	50	21
MC-12	380	85	25	260	100	7	4-M16x2P	118	40	56	23

型式/規格 MODEL/SPEC.	M	N	P	Q	R	S	把握範圍 Max. Gripping Diameter		淨重 Weight (kg)
							外徑把握 O.D. Clamping (mm)	內徑把握 I.D. Clamping (mm)	
MC-06	144	165	144	165	66	18	Ø4~Ø128	Ø55~Ø128	11.4
MC-08	174	200	174	200	83	18	Ø5~Ø162	Ø62~Ø162	18.6
MC-10	218	250	218	250	104	18	Ø6~Ø200	Ø72~Ø200	31.6
MC-12	274	310	274	310	135	22	Ø10~Ø265	Ø90~Ø265	56.6



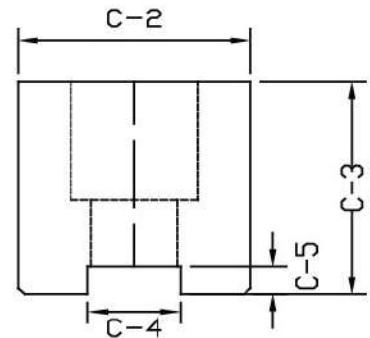
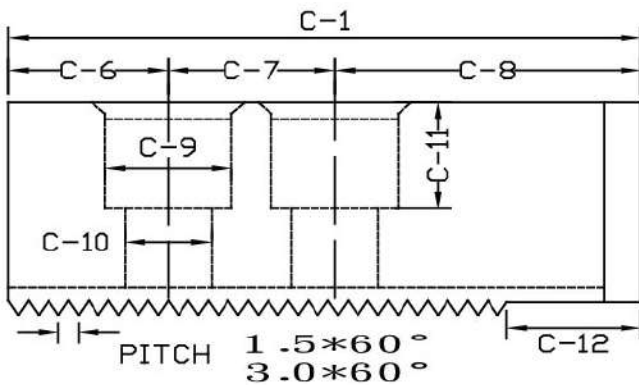
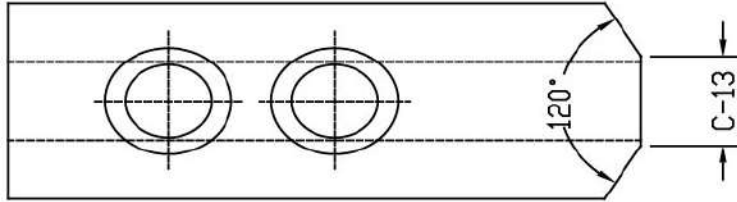
吉華麗精密實業股份有限公司

41143 台中市太平區永豐路 157 巷 24 號

營業項目：CNC 車床用生爪 \ 三爪強力生爪 \ 特殊規格設計製造

客戶名稱 Company: _____ 聯絡人: _____

電話 Tel: ()- _____ 傳真電話 Fax: ()- _____ 日期: 年 月 日



特殊尺寸填寫表

PLEASE FILL THE BLANKS BELOW, IF YOU NEED SPECIFIC ONE(S)

C-1 : _____ C-2 : _____ C-3 : _____ C-4 : _____ C-5 : _____ C-6 : _____ C-7 : _____

C-8 : _____ C-9 : _____ C-10 : _____ C-11 : _____ C-12 : _____ C-13 : _____ P : _____

吉華麗生爪尺寸對照表

PART. NO.	C-1	C-2	C-3	C-4	C-5	C-6	C-7	C-8	C-9	C-10	C-11	C-12	C-13
CH-04	50	27	30	10	4	10	14	26	13.5	9	21	-	3
CH-05	62	27	30	10	4	10	14	38	13.5	9	21	-	3
CH-06	73	31	36	12	5	15(10)	20	38	17	11	23	-	14(3)
CH-08	95	35	38	14	5	24(14)	25	46	19	13	23	20.5	16(3)
CH-10	110	40	42	16	5	30(20)	30	50	19	13	27	20.5	18(3)
CH-12	129	50	50	18	6	39(16)	30	60	23	16	30	20	20(5)
CH-12*	129	50	50	(21)	6	39(18)	30	60	(26)	(17)	30	20	20(5)
CH-15	165	62	62	22	8	37(21)	43	85	32	21	38	18.5	-
CH-21	180	64	70	25	9	40	60	80	32	21	45	-	-
CH-24	180	64	70	25	9	40	60	80	32	21	45	-	-

SUPER JAW INDUSTRY CO.,LTD.

NO.24, Ln.157, YUNG FENG Rd., TAIPING Dist., TAICHUNG CITY 411, TAIWAN

TEL : 886-4-22785378

FAX : 886-4-22706809



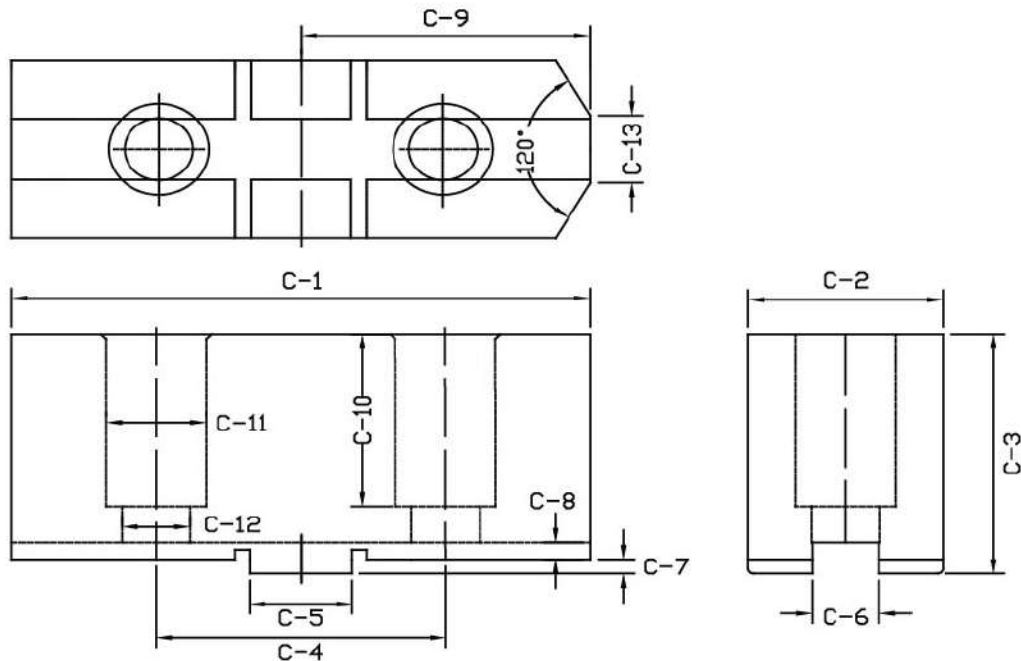
吉華麗精密實業股份有限公司

41143 台中市太平區永豐路 157 巷 24 號

營業項目：CNC 車床用生爪 \ 三爪強力生爪 \ 特殊規格設計製造

客戶名稱 Company: _____ 聯絡人: _____

電話 Tel: ()- _____ 傳真電話 Fax: ()- _____ 日期: 年 月 日



特殊尺寸填寫表

PLEASE FILL THE BLANKS BELOW, IF YOU NEED SPECIFIC ONE(S)

C-1 : _____ C-2 : _____ C-3 : _____ C-4 : _____ C-5 : _____ C-6 : _____ C-7 : _____

C-8 : _____ C-9 : _____ C-10 : _____ C-11 : _____ C-12 : _____ C-13 : _____

吉華麗生爪尺寸對照表

PART. NO.	C-1	C-2	C-3	C-4	C-5	C-6	C-7	C-8	C-9	C-10	C-11	C-12	C-13
SK-04	52	19	30	24	9.53	7.94	2.5	3	26	21	11	7	3
SK-05	62	27	35	32	12.68	7.94	3	3.5	31	24	13.8	9	3
SK-06	78	27	37	38.1	12.68	7.94	3	3.5	41.5	25	13.8	9	5
SK-07	95	31	48	44.45	12.68	7.94	3	3.5	47.5	35	17	11	10
SK-09	110	37	50	54	19.03	12.7	3	3.5	55	36	19	13	15
SK-10	110	37	50	54	19.03	12.7	3	3.5	55	36	19	13	15
SK-12	125	40	50	63.5	19.03	12.7	3	3.5	62.5	36	19	13	17
SK-16	160	50	70	76.2	19.03	12.7	6	5.5	80	48	26	17	—
SK-20	160	50	70	76.2	19.03	12.7	6	5.5	80	48	32	21	—

SUPER JAW INDUSTRY CO.,LTD.

NO.24, Ln.157, YUNG FENG Rd., TAIPING Dist., TAICHUNG CITY 411, TAIWAN

TEL : 886-4-22785378

FAX : 886-4-22706809