

KENTWOOD™

UNITED STATES

Stiles Machinery Inc.

3965 44th St SE
Grand Rapids, MI 49512
United States

+1 616-698-7500
info@stilesmachinery.com

CANADA

HOMAG Canada Inc.

5090 Edwards Blvd.
Mississauga, ON L5T 2W3
Canada

+1 905-679-1700
info-canada@homag.com

TURKEY & MIDDLE EAST

HOMAG Türkiye & Middle East

Şerifali Mah. Türker Cad. No:40/1
34775 Ümraniye
İstanbul
Turkey

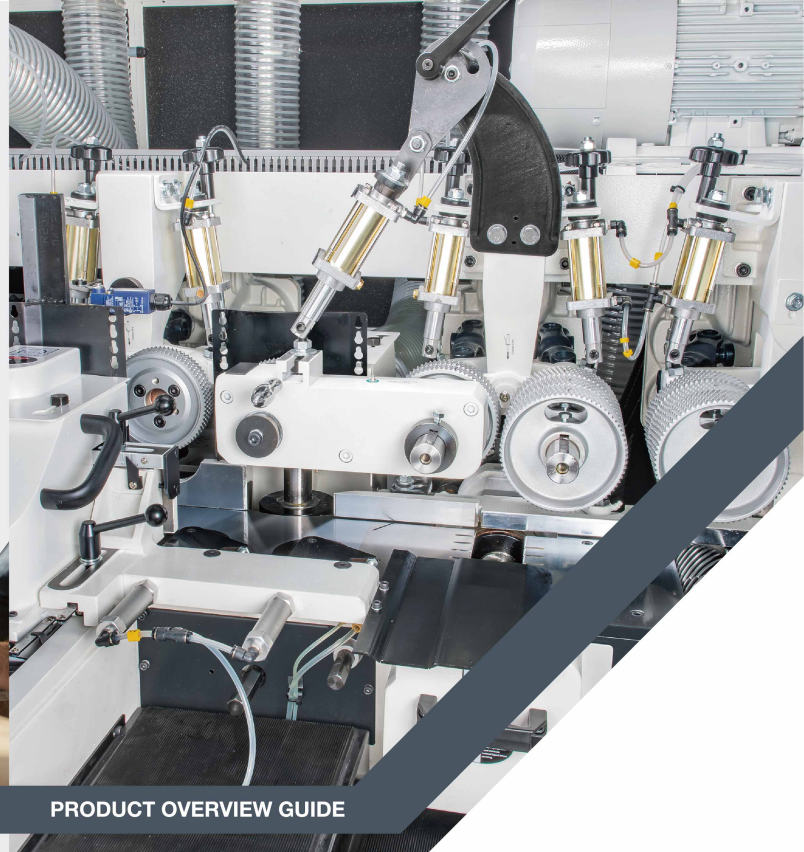
+90 216 365 97 01
sales-turkey@homag.com

ASIA PACIFIC

HOMAG Asia

2 Gambas Crescent
#08-17 Nordcom II
Singapore 757044
Singapore

+65 63698183
info-asia@homag.com



<https://www.kentwoodmachinery.com>

PRODUCT OVERVIEW GUIDE

Planing and Moulding Machine
M-200/200X Series

KENTWOOD™



KENTWOOD™

KENTWOOD woodworking machinery, crafted by a team of American and German engineers, is the go-to choice for modern craftsmen and industrial manufacturers who demand the best in automated solid wood processing solutions. KENTWOOD's commitment to quality and service has been steadfast for over a decade, offering a lineup that includes planers, rip-saws, moulders, and a variety of other high-quality solid wood processing equipment. Our goal is to help you optimize yield and improve accuracy and safety, all while reducing processing time, cutting labor costs, and minimizing the need for rework.

Our comprehensive range of products has earned the trust of thousands of manufacturers across the woodworking and milling industries. These professionals rely on KENTWOOD for consistent performance and exceptional results in their production process.

Our Solutions

- Planers
- Rip-saws
- Moulders
- Moulder Feeders
- Material Handling
- Machine Scrapers
- Horizontal Band Resaws
- Vertical Band Resaws
- Tool Grinders
- Tool Setters
- End Profiling



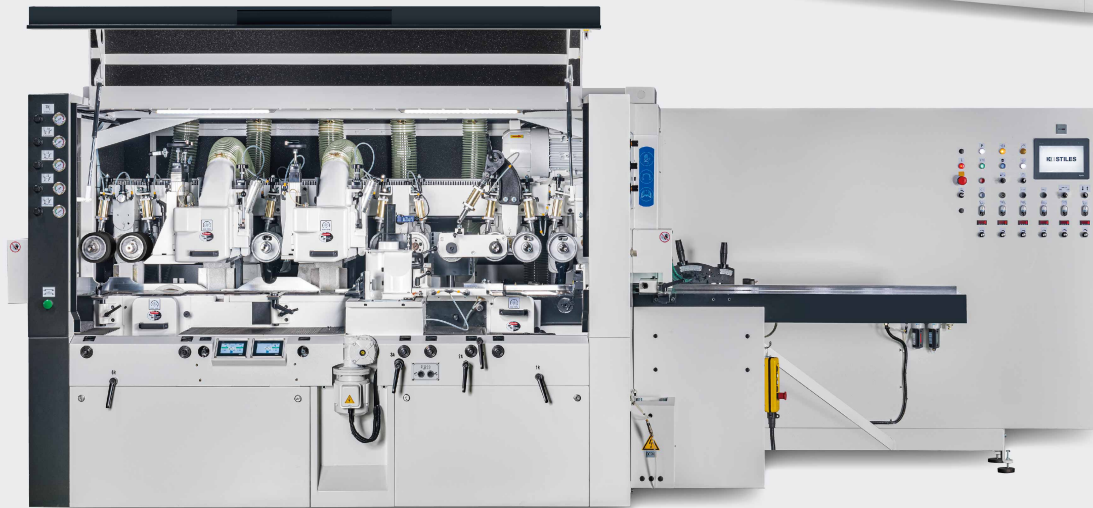
About KENTWOOD Machinery

KENTWOOD™ MOULDERS

Superior Moulding Starts Here.
Precisely Profiled. Efficiently Executed.

M-200/M-200X Planing and Moulding Machines

The KENTWOOD M-200 and M-200X series are the perfect entry into solid wood processing with features you'd expect from a best-in-class moulder. It is available in a professional specification as well as the X class, which boasts a technology package that adds even more power and features.

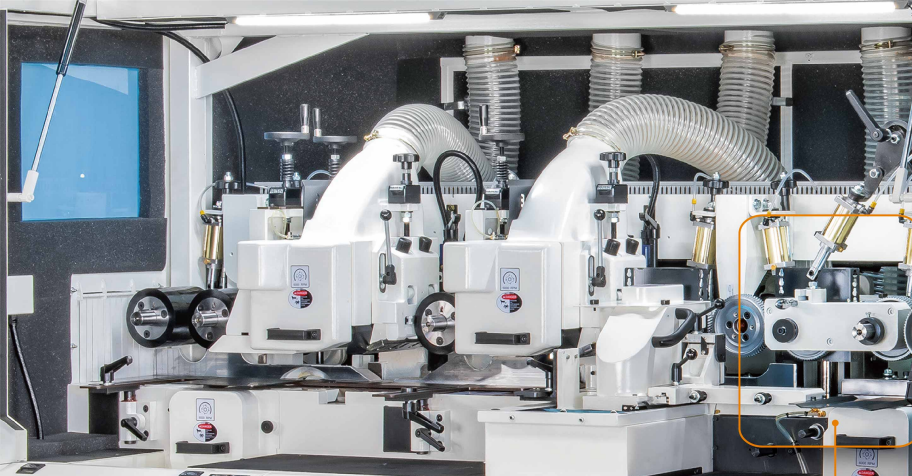


M-200 Series

- ✓ Professional level
- ✓ High quality
- ✓ Value-added features

M-200X Series

- ✓ More technology
- ✓ More power
- ✓ More features



KENTWOOD™

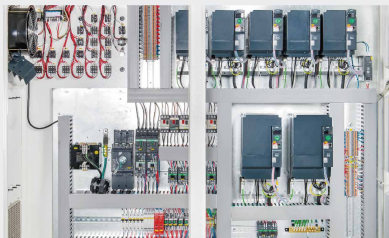
Chrome Table Surface & Ergonomic Infeed Table

Hardened industrial chrome provides durability and excellent performance with MDF or tropical woods. The ergonomic infeed table features adjustable fence height, built-in lubrication, pressure regulation, and a user-friendly layout for efficient operation.



Performance Features:

- One-piece cast iron frame ensures maximum rigidity and vibration damping, while the standard sound enclosure enhances safety and reduces noise
- Each spindle is powered by its own high-performance motor with precision bearings, ensuring smooth, powerful, and reliable operation
- Spindle speeds up to 6,000 RPM for fine surface finishing (up to 8,000 RPM on M-200X for even higher throughput and smoother results)
- Feed speed up to 24 m/min (78.74 FPM) on M-200; up to 30 m/min (98.43 FPM) on M-200X.
- Pneumatic top feed roll and side pressure systems provide consistent hold-down and accurate guiding
- Full-width driven infeed and outfeed rollers for smooth material handling
- Grease-lubricated internal components for maintenance-free operation
- Centralized table lubrication system (automatic version included in M-200X)



Inverter Spindle Control

High-quality inverters ensure smooth spindle start/stop, enhance safety, reduce wear, and lower energy and maintenance costs.

Short Stock Feeder Gearbox

Reduces distance between rollers for better processing of shorter workpieces.



Handheld Pendant

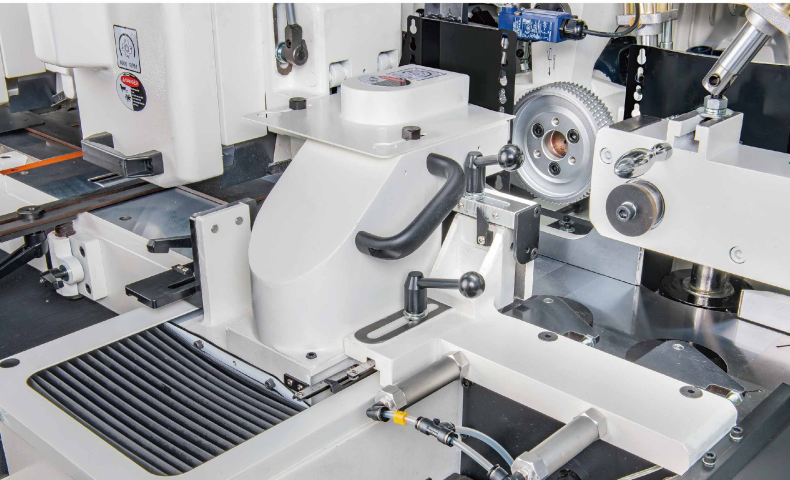
Ergonomic remote control for emergency stops and quick feed roller and spindle adjustments.

XP Urethane Drive Rollers

Positioned after the last top spindle, these durable rollers offer superior traction and longer life compared to traditional rubber. Their two-piece design reduces maintenance costs by allowing easy tire replacement.



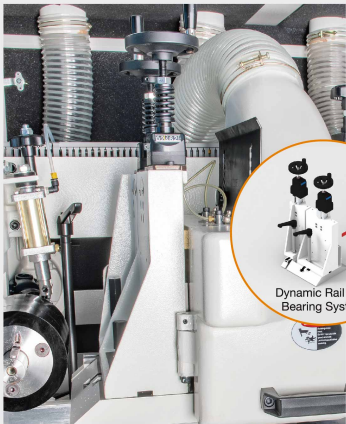
M-200/M-200X PRODUCT FEATURES



Quick Set System

Tool-free adjustments with kipp lever handles and analog scales simplify setup. This ergonomic design reduces setup time by up to 50% and improves daily operation efficiency.

M-200



Split Pad Pressure Shoes

Dual independent pressure shoes with spring tension and digital readouts ensure accurate and flexible control.

M-200X



Pneumatic Pressure Elements

Upgraded from spring to pneumatic tension. External regulators allow quick adjustments based on profile size, reducing setup time.

M-200



Operator Control Panel

Main controls are located at the infeed, including spindle on/off, speed display, and emergency stops. Additional safety and transport controls are positioned along the machine for easy access.

M-200X

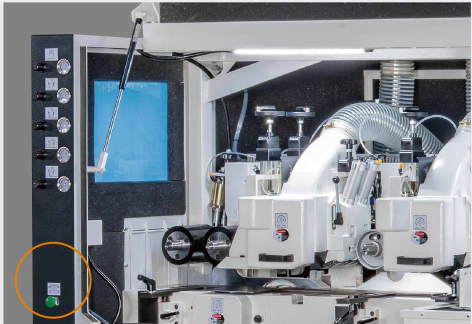


HMI Touchscreen

Multilingual easy set software featuring easy to use diagnostics and storage for up to 200 profiles.

Adjustable Spindle Speeds

Variable spindle speeds add versatility, allowing for a superior finish and higher output.



M-200X

Dump Release Valve

A green button at the rear instantly releases pneumatic pressure from the top elements when a board gets stuck-no need to stop the machine or manually adjust. This saves time and keeps production moving.

M-200/M-200X PRODUCT FEATURES

M-200



Quick Spindle Setup

Each spindle offers axial/radial manual adjustment with SIKO-style digital readouts and dual-window tool offset input for fast, precise setup.

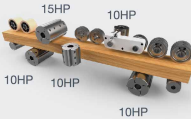
M-200X



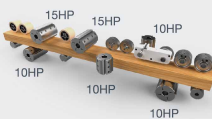
LCD Spindle Displays

View live spindle positioning and setup instructions with easy-to-read LCD displays.

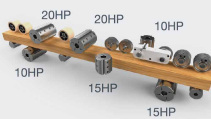
M-200/5



M-200/6



M-200X/6



● 10HP (7.5kW) / 15HP (11kW) / 20HP (15kW)

Technical Details

Model	No. Spindles	Height	Length	Width	Weight
M-200(X)/5	5	1,870 mm (74")	4,347 mm (171")	1,896 mm (75")	3,798.8 kg (8,375 lbs)
M-200(X)/6	6	1,870 mm (74")	4,887 mm (192")	1,896 mm (75")	4,748.7 kg (10,469 lbs)

Specifications

	M-200	M-200X
Min/Max Number of Spindles	4 to 8 Spindles	
Working Width (at a tool cutting circle of 125mm / 4.92")	15 - 250 mm (0.59" - 9.84")	
Working Thickness (at a tool cutting circle of 125mm / 4.92")	10 - 160 mm (0.39" - 6.30")	
Min/Max Spindle Motor Capacity	7.5 HP (5.59 kW) / 20 HP (14.9 kW)	
Spindle Diameter Options	40mm, 1-1/2", 1-13/16"	
Spindle Speed	6,000 RPM	4,000 - 8,000 RPM
Tool Cutting Circle, First Bottom Spindle, Min-max	125 - 160 mm (4.92" - 6.30")	
Tool Cutting Circle, Vertical Spindles, Min-max	112 - 200 mm (4.41" - 7.87")	
Tool Cutting Circle, Horizontal Spindles, Min-max	112 - 200 mm (4.41" - 7.87")	
Feed Speed, Infinitely Variable	6 - 24 m/min (19.69 - 78.74 FPM)	6 - 30 m/min (19.69 - 98.43 FPM)
Adjustment Range of Vertical Spindles (Axial)	60 mm (2.36")	
Adjustment Range of Horizontal Spindles (Axial)	20 mm (0.79")	
Pressure Elements	Spring Tension	Pneumatic Tension
Table Lubrication Pump	Manual	Automatic
Handheld Pendant	Std	Std
Dump Release Valve	Opt	Std
Setup Assistance/Technology	Mech Dual Digital Counters	EasySet 10.1" inch

M-200/M-200X Feature Comparison

M-200	M-200X
Fixed RPM	Elec Variable Spindle RPM
Spring Pressure Elements	Pneumatic Pressure Elements
Single Segment Pad Shoe	Split Pad Shoe
NA	EasySet Software
SIKO Mechanical Dual Digital DRO	HMI Touch Screen
NA	Dump Release Valve

X Performance Options Comparison

The M-200X models offer slightly more horsepower with additional features, providing more flexibility and capacity compared to the standard M-200.

