

# KENTWOOD™

## UNITED STATES

### Stiles Machinery Inc.

3965 44th St SE  
Grand Rapids, MI 49512  
United States

+1 616-698-7500  
info@stilesmachinery.com

## TURKEY & MIDDLE EAST

### HOMAG Türkiye & Middle East

Şerifali Mah. Türker Cad. No:40/1  
34775 Ümraniye  
İstanbul  
Turkey

+90 216 365 97 01  
sales-turkey@homag.com

## CANADA

### HOMAG Canada Inc.

5090 Edwards Blvd.  
Mississauga, ON L5T 2W3  
Canada

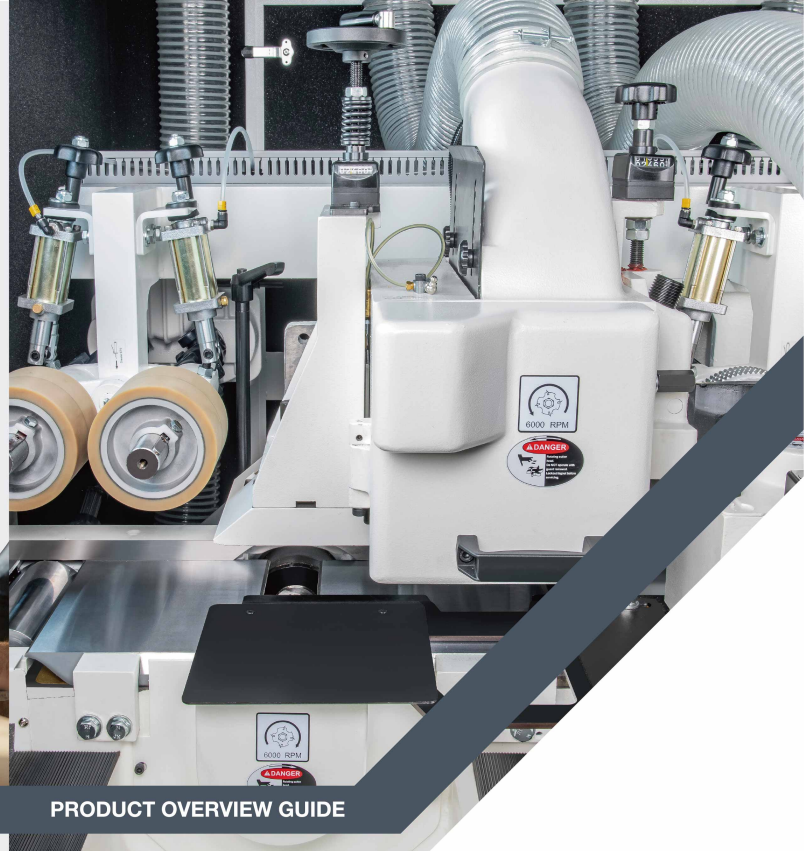
+1 905-679-1700  
info-canada@homag.com

## ASIA PACIFIC

### HOMAG Asia

2 Gambas Crescent  
#08-17 Nordcom II  
Singapore 757044  
Singapore

+65 63698183  
info-asia@homag.com



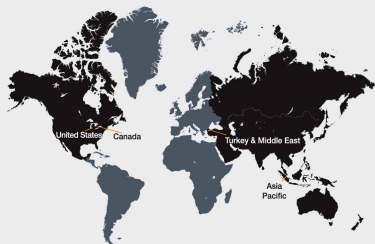
<https://www.kentwoodmachinery.com>

PRODUCT OVERVIEW GUIDE

Planing and Moulding Machine

# M-100 Series

# KENTWOOD™



# KENTWOOD™

KENTWOOD woodworking machinery, crafted by a team of American and German engineers, is the go-to choice for modern craftsmen and industrial manufacturers who demand the best in automated solid wood processing solutions. KENTWOOD's commitment to quality and service has been steadfast for over a decade, offering a lineup that includes planers, rip saws, moulders, and a variety of other high-quality solid wood processing equipment. Our goal is to help you optimize yield and improve accuracy and safety, all while reducing processing time, cutting labor costs, and minimizing the need for rework.

Our comprehensive range of products has earned the trust of thousands of manufacturers across the woodworking and milling industries. These professionals rely on KENTWOOD for consistent performance and exceptional results in their production process.

## Our Solutions

- Planers
- Rip saws
- Moulders
- Moulder Feeders
- Material Handling
- Machine Scrapers
- Horizontal Band Resaws
- Vertical Band Resaws
- Tool Grinders
- Tool Setters
- End Profiling

## About KENTWOOD Machinery

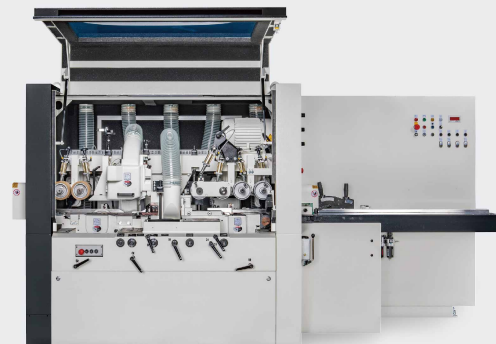


# KENTWOOD™ MOULDERS

Quality Built. Performance Ready.  
Value Delivered.

## M-100 Planing and Moulding Machines

The KENTWOOD M-100 series represents the ideal first step into high-quality four-sided moulding, offering a blend of unique features, dependable quality, and affordability. The heavy-duty cast iron frame of this moulder machine guarantees precision and delivers superior finish quality, while its robust design and high-quality components of this woodworking moulder make it optimal for single and multi-shift use. The ergonomic design allows the operator to be more efficient, reducing cycle times and increasing production capabilities.



## M-100 Series

- ✓ Quality
- ✓ Affordability
- ✓ Feature-rich
- ✓ Small footprint

## Chrome Table Surface & Ergonomic Infeed Table

Hardened industrial chrome provides durability and excellent performance with MDF or tropical woods. The ergonomic infeed table features adjustable fence height, built-in lubrication, pressure regulation, and a user-friendly layout for efficient operation.

## Short Stock Feeder Gearbox

Reduces distance between rollers for better processing of shorter workpieces.

## Robust Feed System

Electronically variable feed system with heavy-duty gearboxes and cardan shaft drive delivers consistent power. Hardened steel and non-marking rubber rollers ensure smooth material flow, while full-width table rollers enhance feed stability.



## Performance Features:

- One-piece cast iron frame ensures maximum rigidity and vibration damping, while the standard sound enclosure enhances safety and reduces noise
- Faster feed speeds up to 24 meters per minute (80 FPM) for higher production efficiency
- Front of machine includes digital SIKO-style digital readouts for manual spindle adjustment. Spindles that manage product width and thickness feature dual-window tool offset for fast and accurate setup
- Spindles are powered by high performance Siemens IE3 motors with precision bearings, ensuring smooth, powerful, and reliable operation
- Spindle RPM up to 6,000 for fine surface finishing
- Pneumatic top feed roll pressure provides consistent hold-down and accurate material guiding
- Table surfaces are hard-chrome plated for maximum wear resistance
- All manually adjusted points use permanent grease-lubricated bearings for maintenance-free operation

## Operator Control Functions

Main control panel at the infeed includes spindle controls, feed speed display, transport functions, emergency stop, and diagnostics. Additional emergency stops and transport controls are positioned along the machine for safety and convenience.



## Quick Spindle Setup

Spindle adjustment at machine front includes mechanical digital SIKO style digital readouts. Spindles that manage product width and thickness feature dual window feature. Thus, allowing tool radial offset input to promote fast and accurate setup.



## M-100 PRODUCT FEATURES



### Superior Spindle Quality

Heavy-duty spindles weighing over 80 lbs (36 kg) are built with dual matched pairs of high-quality bearings for maximum precision. Spindles are driven by a quiet flat belt system.

### ProLock Tool System

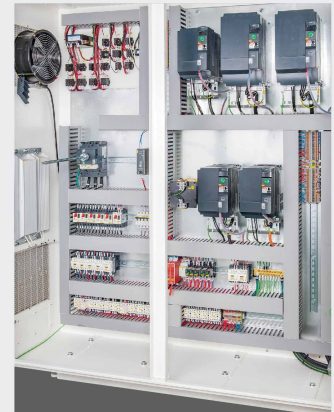
The internal thread clamping system protects spindle threads and ensures self-centering for better tool balance, even at high RPMs. Using a 4 mm tee handle wrench, tool changes are fast, easy, and safe. Clamping force is 2.5 times greater than traditional systems, delivering more secure and reliable tool performance.

### Short Stock Feeder Gearbox

Reduces distance between rollers for better processing of shorter workpieces.

### Inverter Spindle Control

High-quality inverters ensure smooth spindle start/stop, enhance safety, reduce wear, and lower energy and maintenance costs.

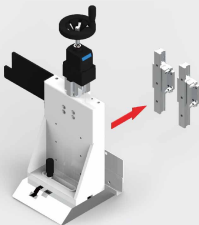


M-100 PRODUCT FEATURES



Pressure Elements Adjustment

Top pressure elements are equipped with SIKO-style mechanical digital readouts (DRO), available in imperial or metric units. Operators can quickly position elements using tool radius measurements for accurate setup.



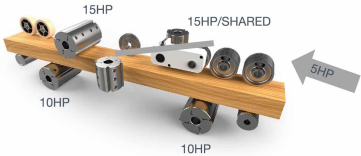
Dynamic Rail and Bearing System

The dynamic rail and bearing system designed for the top pressure element eliminates friction and binding, delivering smoother pressure control and better finish-especially on small profiles.

Specifications

M-100	
Min/Max Number of Spindles	4 to 5 Spindles
Working Width (at a tool cutting circle of 125 mm / 4.92")	15 - 230 mm (0.59" - 9.06")
Working Thickness (at a tool cutting circle of 125 mm / 4.92")	10 - 125 mm (0.39" - 4.92")
Min/Max Spindle Motor Capacity	7.5 HP (5.59 kW) / 20 HP (14.9 kW)
Spindle Diameter Options	40 mm, 1-1/2", 1-13/16"
Spindle Speed	6,000 RPM
Tool Cutting Circle, First Bottom Spindle, Min-max	125 - 160 mm (4.92" - 6.30")
Tool Cutting Circle, Vertical Spindles, Min-max	112 - 180 mm (4.41" - 7.09")
Tool Cutting Circle, Horizontal Spindles, Min-max	112 - 200 mm (4.41" - 7.87")
Feed Speed, Infinitely Variable	6 - 24 m/min (19.69 - 78.74 FPM)
Adjustment Range of Vertical Spindles (Axial)	20 mm (0.79")
Adjustment Range of Horizontal Spindles (Axial)	20 mm (0.79")
Pressure Elements	Spring Tension
Table Lubrication Pump	Manual
Handheld Pendant	Opt
Dump Release Valve	Opt
Setup Assistance/Technology	Mech Dual Digital Counters

M-100/5



● 5HP (3.75kW) / 10HP (7.5kW) / 15HP (11kW)



Technical Details

Model	No. Spindles	Height	Length	Width	Weight
M-100/5	5	1,788 mm (70")	3,496 mm (137")	1,606 mm (86")	3,800 kgs (7,700 lbs)