

KENTWOOD™

UNITED STATES

Stiles Machinery Inc.

4577 Patterson Ave SE
Grand Rapids, MI 49512
United States

+1 616-698-7500
info@stilesmachinery.com

CANADA

HOMAG Canada Inc.

5090 Edwards Blvd.
Mississauga, ON L5T 2W3
Canada

+1 905-679-1700
info-canada@homag.com

TURKEY & MIDDLE EAST

HOMAG Türkiye & Middle East

Şerifali Mah. Türker Cad. No:40/1
34775 Ümraniye
İstanbul
Turkey

+90 216 365 97 01
sales-turkey@homag.com

ASIA PACIFIC

HOMAG Asia

2 Gambas Crescent
#08-17 Nordcom II
Singapore 757044
Singapore

+65 63698183
info-asia@homag.com



<https://kentwoodmachinery.com>

PRODUCT OVERVIEW GUIDE

Planing and Moulding Machine

M-300 Series

KENTWOOD™



KENTWOOD™

KENTWOOD woodworking machinery, crafted by a team of American and German engineers, is the go-to choice for modern craftsmen and industrial manufacturers who demand the best in automated solid wood processing solutions. KENTWOOD's commitment to quality and service has been steadfast for over a decade, offering a lineup that includes planers, rip-saws, moulders, and a variety of other high-quality solid wood processing equipment. Our goal is to help you optimize yield and improve accuracy and safety, all while reducing processing time, cutting labor costs, and minimizing the need for rework.

Our comprehensive range of products has earned the trust of thousands of manufacturers across the woodworking and milling industries. These professionals rely on KENTWOOD for consistent performance and exceptional results in their production process.

Our Solutions

- Planers
- Rip-saws
- Moulders
- Moulder Feeders
- Material Handling
- Machine Scraper
- Horizontal Band Resaws
- Vertical Band Resaws
- Tool Grinders
- Tool Setters
- End Profiling



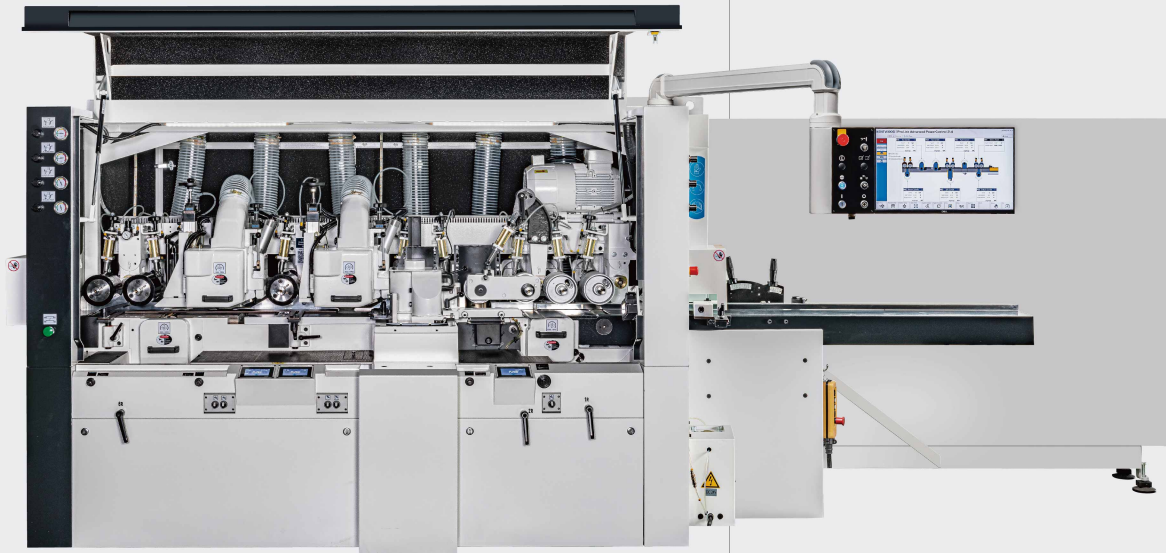
About KENTWOOD Machinery

KENTWOOD™ MOULDERS

Innovation Refined. Power Delivered.
Technology Integrated.

M-300 Planing and Moulding Machine

The M-300 is the next evolution in the KENTWOOD lineup—merging refined engineering, digital control, and precision spindle technology. Built for speed, automation, and seamless toolroom integration, it delivers performance you can rely on.



M-300 Series

- ✓ Highest technology
- ✓ Toolroom link
- ✓ HSK variant



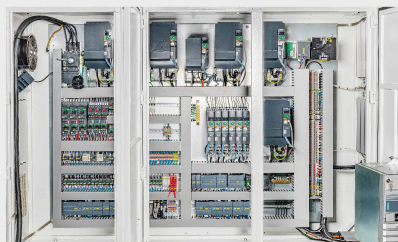
KENTWOOD[®]

Chrome Table Surface & Ergonomic Infeed Table

Hardened industrial chrome provides durability and excellent performance with MDF or tropical woods. The ergonomic infeed table features adjustable fence height, built-in lubrication, pressure regulation, and a user-friendly layout for efficient operation.

Performance Features:

- One-piece cast iron frame ensures maximum rigidity and vibration damping, while the standard sound enclosure enhances safety and reduces noise
- Each spindle is powered by its own high-performance motor with precision bearings, ensuring smooth, powerful, and reliable operation
- Variable spindle speed from 4000 to 8000 RPM enables high feed rates while maintaining excellent surface finish
- Feed speed adjustable up to 30 m/min (98.43 FPM) for high-efficiency production
- Pneumatic top feed roll and side pressure systems provide consistent hold-down and accurate guiding
- Full-width driven infeed and outfeed rollers for smooth material handling
- Grease-lubricated internal components for maintenance-free operation
- Centralized automatic table lubrication system ensures consistent performance and reduces maintenance



Inverter Spindle Control

High-quality inverters ensure smooth spindle start/stop, enhance safety, reduce wear, and lower energy and maintenance costs.

Short Stock Feeder Gearbox

Reduces distance between rollers for better processing of shorter workpieces.

Dump Release Valve

Green button quickly releases pressure when board gets stuck.

Spindle Information Display

Spindle setups are managed through the Advanced PowerControl (APC) system. Powered spindle positions feature LCD displays that provide real-time location and specific tool information. Non-powered positions are supported by high-quality LED indicators. This guidance ensures accurate, repeatable setups, regardless of the operator's experience.



M-300 PRODUCT FEATURES



Advanced PowerControl HMI (APC)

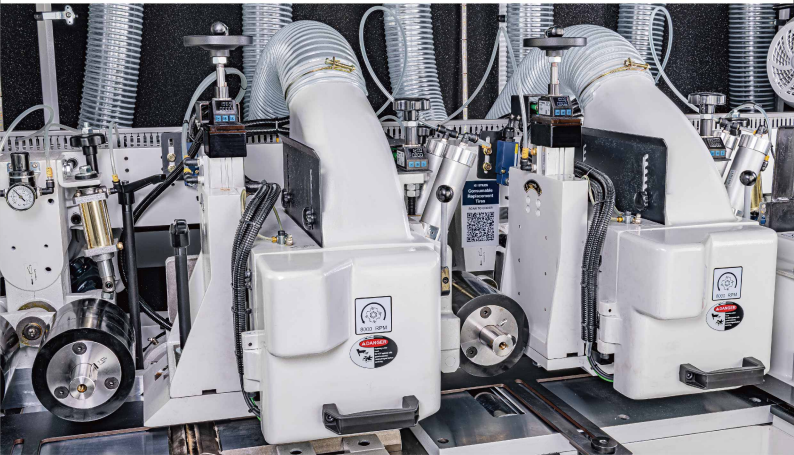
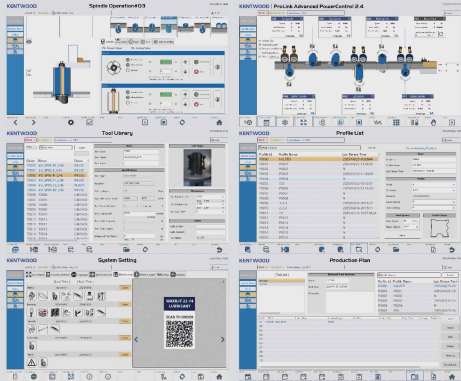
Standard 24" touchscreen with ProLink software, supporting 10,000 tools, 2,000 profiles, production scheduling, and up to 20 users. Programs can be created remotely and sent electronically to the machine. Fully compatible with toolroom software and measuring devices.

Maintenance Manager

Track daily, weekly, and monthly maintenance tasks easily. Quick menus provide maintenance procedures, lubrication information, and fast access to spare and consumable parts.

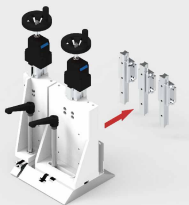
Easy to Order

Tooling, lubrication supplies, and parts can be ordered instantly by scanning Easy-to-Order QR codes with a smartphone—connecting directly to the webstore for fast purchasing.



Pressure Elements System

Pneumatic elements feature external regulators for fast adjustment. All spindles and top pressure elements are monitored by the Advanced PowerControl system, providing setup guidance through electronic feedback.



ProLink Software Interface

ProLink software provides intuitive control with individual spindle data windows and quick-access function keys. Animated color indicators show real-time spindle status. Multi-swipe navigation lets operators preview workpiece and tool positions before startup, speeding up setup and improving accuracy.

Profile & Tool Manager

Save up to 2,000 profiles and 10,000 tools electronically, complete with drawings, images, and key setup data for easy operator access.

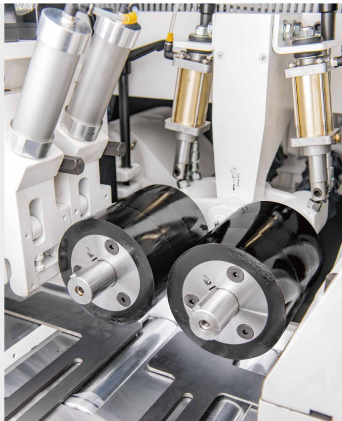
Production Manager

Assign jobs by priority and manage up to 10 moulders when connected to ProLink toolroom software. Completed schedules can be exported to the office for review and planning.

Dynamic Rail and Bearing System

The dynamic rail and bearing system designed for the top pressure element eliminates friction and binding, delivering smoother pressure control and better finish—especially on small profiles.

M-300 PRODUCT FEATURES



XP Urethane Drive Rollers

Positioned after the last top spindle, these durable rollers offer superior traction and longer life compared to traditional rubber. Their two-piece design reduces maintenance costs by allowing easy tire replacement.



Quick Set System

Enables tool-free, fast setup with kipp lever handles and analog scales.



Handheld Pendant

Ergonomic remote control for emergency stops and quick feed roller and spindle adjustments.



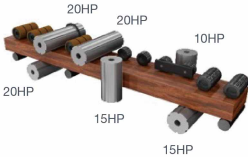
HSK Variant (Optional)

HSK 85WS spindles are available as an option for spindle positions requiring frequent tool changes. A typical configuration includes HSK spindles on both vertical spindles and the last top and bottom horizontal spindles. HSK spindles feature electronically variable speeds from 6000 to 8000 RPM and support tool cutting circles from 93 mm to 203 mm.

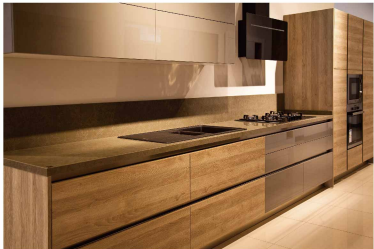
Specifications

M-300	
Number of Spindles, Min-max	4 to 8 Spindles
Working Width (at a tool cutting circle of 125 mm / 4.92")	15 - 250 mm (0.59" - 9.84")
Working Thickness (at a tool cutting circle of 125 mm / 4.92")	10 - 160 mm (0.39" - 6.30")
Min/Max Spindle Motor Capacity	7.5 HP (5.59 kW) / 20 HP (14.9 kW)
Spindle Diameter Options	4000 - 8000 RPM
Spindle Speed	125 - 160 mm (4.92" - 6.30")
Tool Cutting Circle, First Bottom Spindle, Min-max	112 - 200 mm (4.41" - 7.87")
Tool Cutting Circle, Vertical Spindles, Min-max	112 - 200 mm (4.41" - 7.87")
Tool Cutting Circle, Horizontal Spindles, Min-max	6 - 30 m/min (19.69 - 98.43 FPM)
Feed Speed, Infinitely Variable	60 mm (2.36")
Adjustment Range of Vertical Spindles (axial)	20 mm (0.79")
Adjustment Range of Horizontal Spindles (axial)	20 mm (0.79")
Pressure elements	Pneumatic Tension
Table lubrication pump	Automatic
Handheld pendant	Std
Dump Release valve	Std
Setup Assistance/technology	Advanced Power Control 24" inch

M-300/6



● 10HP (7.5kW) / 15HP (11kW) / 20HP (15kW)



Technical Details

Model	No. Spindles	Height	Length	Width	Weight
M-300/6	6	1780mm (70")	4487mm (176")	1870mm (69")	4750KGS (10,469lbs)