

KENTWOOD™

Stiles Machinery Inc.

Corporate Headquarters

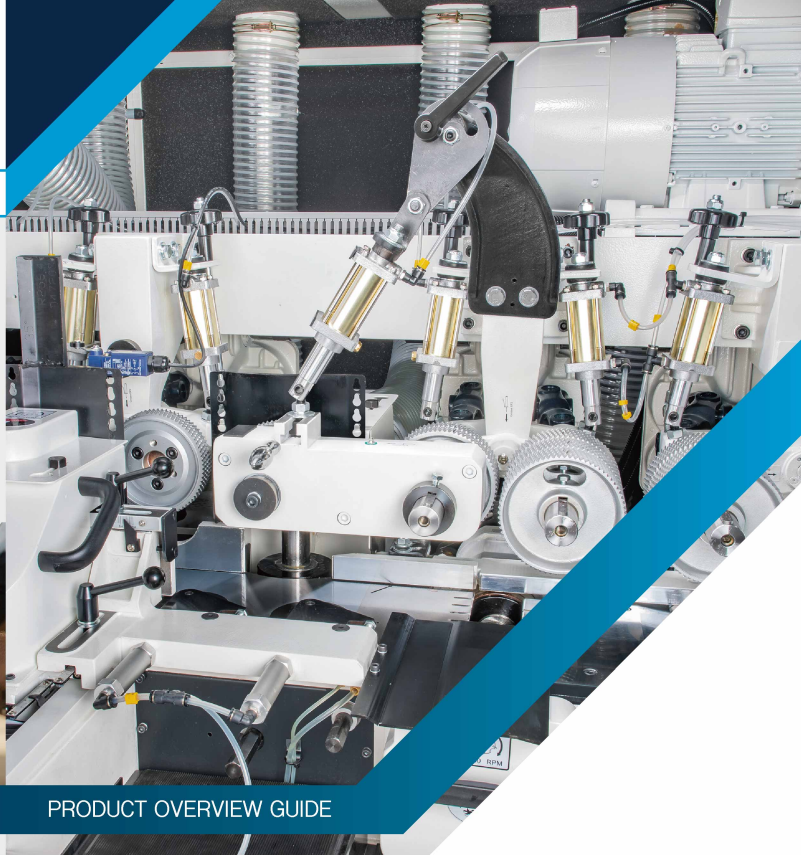
3965 44th St. SE

Grand Rapids, MI 49512

Phone: 616-698-7500



<https://stilesmachinery.com/brand/kentwood/>



PRODUCT OVERVIEW GUIDE

Planing and Moulding Machine
M-200/200X Series

KENTWOOD™



KENTWOOD™

KENTWOOD woodworking machinery, crafted by a team of American and German engineers, is the go-to choice for modern craftsmen and industrial manufacturers who demand the best in solid wood processing solutions. KENTWOOD's commitment to quality and efficiency has been steadfast for over a decade, offering a lineup that includes planers, rip saws, moulders, and a variety of other solid wood processing equipment. Our focus is on optimizing material yield and enhancing accuracy and safety, all while reducing processing time, cutting labor costs, and minimizing the need for rework.

Our comprehensive range of products has earned the trust of thousands of manufacturers across the wood-working and milling industries. These professionals rely on KENTWOOD for consistent performance and exceptional results in their production processes.



About KENTWOOD
Machinery

Discover the Diversity of KENTWOOD Solutions by Exploring Our Theme Worlds –
Clearly Organization and Compact!

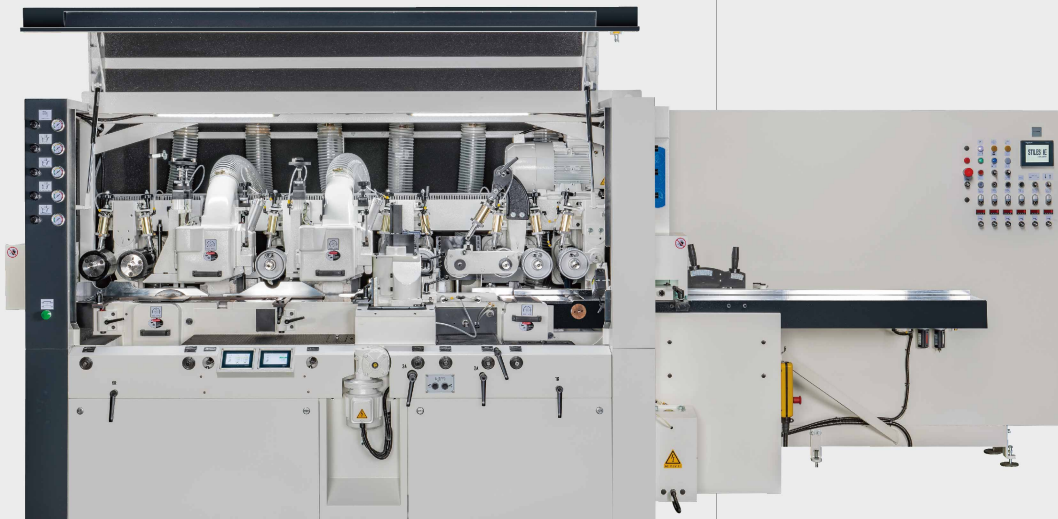
KENTWOOD™ MOULDERS

PRODUCT OVERVIEW GUIDE

The Process Starts Here.
Precisely Profiled. Four-sided Solution.

M-200/M-200X Planing and Moulding Machine

The Kentwood M200/M200X series brings many features to the table you'd expect from a best-in-class moulder solution. It is available in a traditional specification as well as a technology package featured in the X class.

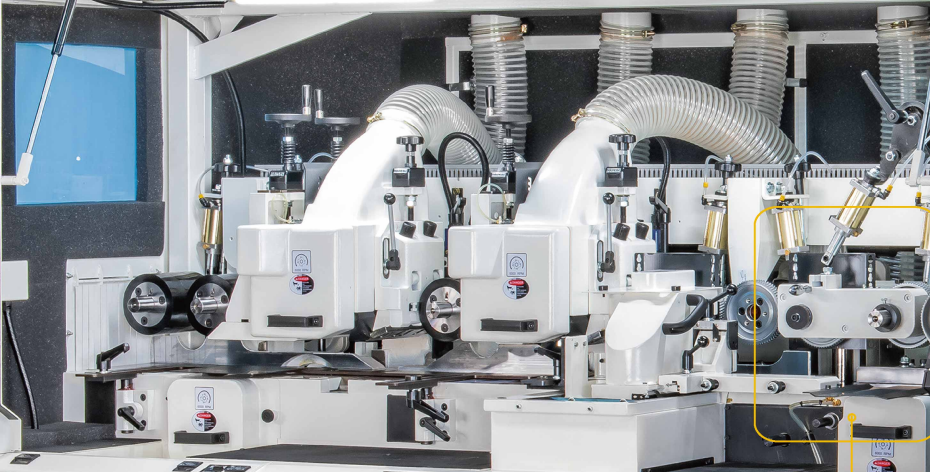


M-200 Series

- ✓ Professional level
- ✓ High quality
- ✓ Value added features

M-200X Series

- ✓ More technology
- ✓ More power
- ✓ More features

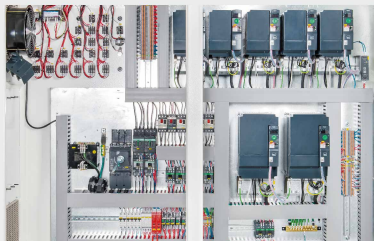


Chrome Table Surface & Ergonomic Infeed Table

Hardened industrial chrome provides durability and excellent performance with MDF or tropical woods. The ergonomic infeed table features adjustable fence height, built-in lubrication, pressure regulation, and a user-friendly layout for efficient operation.

Performance Features:

- One-piece cast iron frame ensures maximum rigidity and vibration damping, while the standard sound enclosure enhances safety and reduces noise.
- Each spindle is powered by its own high-performance Siemens motor with precision bearings, ensuring smooth, powerful, and reliable operation trusted worldwide.
- Spindle RPM up to 6000 for fine surface finishing (up to 8000 RPM on M200X for higher throughput and smoother results).
- Pneumatic top feed roll and side pressure systems provide consistent hold-down and accurate guiding.
- Full-width driven infeed and outfeed rollers for smooth material handling.
- Grease-lubricated internal components for maintenance-free operation.
- Centralized table lubrication system (automatic version included in M200X).



Inverter Spindle Control

High-quality inverters ensure smooth spindle start/stop, enhance safety, reduce wear, and lower energy and maintenance costs.

Short Stock Feeder Gearbox

Reduces distance between rollers for better processing of shorter workpieces.



Handheld Pendant

Portable control with feed roller adjustment and emergency stop, allowing full-length machine operation during setup.

XP Urethane Drive Rollers

Positioned after the last top spindle, these durable rollers offer superior traction and longer life compared to traditional rubber. Their two-piece design reduces maintenance costs by allowing easy tire replacement.



M-200 / M-200X PRODUCT FEATURES



Quick Set System

Tool-free adjustments with kipp lever handles and analog scales simplify setup. This ergonomic design reduces setup time by up to 50% and improves daily operation efficiency.

M-200



Operator Control Panel

Main controls are located at the infeed, including spindle on/off, speed display, and emergency stops. Additional safety and transport controls are positioned along the machine for easy access.

M-200X



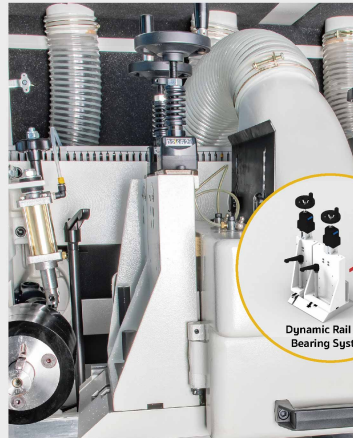
Touchscreen HMI

EasySet software, up to 200 profile storage, diagnostics, multilingual.

Variable Spindle RPM

Spindle speed adjustable for better surface finish and higher output.

M-200



Dynamic Rail and Bearing System

M-200X

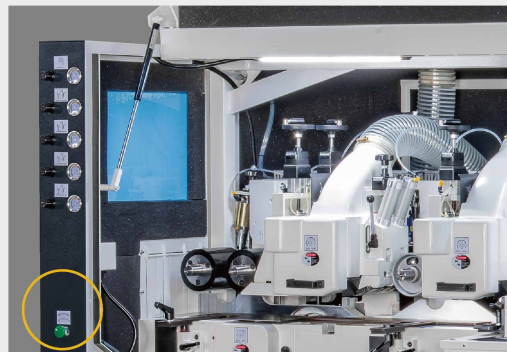


Split Pad Pressure Shoes

Dual independent pressure shoes with spring tension and digital readouts ensure accurate and flexible control.

Pneumatic Pressure Elements

Upgraded from spring to pneumatic tension. External regulators allow quick adjustments based on profile size, reducing setup time.



M-200X

Dump Release Valve

A green button at the rear instantly releases pneumatic pressure from the top elements when a board gets stuck—no need to stop the machine or manually adjust. This saves time and keeps production moving.

PRODUCT FEATURES

M-200



Quick Spindle Setup

Each spindle offers axial/radial manual adjustment with SIKO-style digital readouts and dual-window tool offset input for fast, precise setup.

M-200X



LCD Spindle Displays

LCD provides live spindle positioning and setup instructions

M200/5



M200/6



M-200X/6



Technical Details

Model	No. Spindles	Height	Length	Width	Weight
M200/5 (X)	5	70"	155"	69"	8,375lbs
M200/6 (X)	6	70"	176"	69"	10,469lbs

Specifications

	M200	M200X
Number of Spindles, Min-max	4 to 8 Spindles	
Working Width (at a tool cutting circle of 163mm)	15-230 mm (0.59"-9.06")	
Working Thickness (at a tool cutting circle of 163mm)	10-150 mm (0.39"-5.91")	
Basic Spindle Motor Capacity	7.5 HP (5.59 kW) / 10 HP (7.46 kW)	10 HP (7.46 kW) / 15 HP (11.19 kW)
Spindle Diameter	40mm, 1-1/2", 1-13/16"	
Spindle Speed	6000 RPM	4000 ~ 8000 RPM
Tool Cutting Circle, First Bottom Spindle, Min-max	125 - 160 mm (4.92" - 6.30")	
Tool Cutting Circle, Vertical Spindles, Min-max	112 - 200 mm (4.41" - 7.87")	
Tool Cutting Circle, Horizontal Spindles, Min-max	112 - 200 mm (4.41" - 7.87")	
Feed Motor	5 HP (3.73 kW) / INVERTER	
Feed Speed, Infinitely Variable	6-24 M/min	6-30 M/min
Feed Roll Diameter	140 mm (5.51")	
Top Feed Roll Width	50 mm (1.97")	
Bottom Feed Roll Width	Full Width	
Pneumatic Pressure for Feed Rolls, Max	6 bar	
Adjustment Range for Infeed Table and Edge-Jointing Fence	10 mm (0.39")	
Adjustment Range of Vertical Spindles (axial)	60 mm (2.36")	
Adjustment Range of Horizontal Spindles (axial)	20 mm (0.79")	
Length of the Infeed Straightening table	2M	
Diameter of Dust Hoods for Vertical & Horizontal Spindles	125 mm (4.92")	
Mechanical Digital Readouts on All Axis of All Spindles	Std.	
Mechanical Digital Readouts for the Chip breakers & Pressure Shoes	Std.	
Full Sound and Safety Enclosure	Std.	
Motorized Vertical Adjustment of Feed Beam	Std.	
Lateral Pressure Roller Opposite First Right Spindle	Spring Tensioned Standard	Pneumatic Tensioned Standard
Chainless Cardan Shaft Feed System	Std.	

M-200	M-200X
Manual Lubrication Pump	Automatic Lubrication Pump
Push button station	Handheld pendant
Fixed RPM	Elec Variable Spindle RPM
Spring Pressure elements	Pneumatic Pressure Elements
Single Segment Pad Shoe	Split Pad Shoe
NA	Quick Set
Fixed dust hood (near side spindle)	Removable dust hood
NA	Dump release valve
SIKO mechanical Dual Digital DRO	Touch screen HMI (EasySet)

X Performance Options Comparison

The M200X models offer slightly more horsepower and capacity overall as compared to a standard M200 model.

Please refer to the chart comparison on feature included in the X models.